

ISSN 1027-4081

Fréttarit KOS

Nr. 26

Tölur ársins 2001

KJARARANNSÓKNARNEFND OPINBERRA STARFSMANNA (KOS)

skipa nú eftirtaldir aðilar:

Fulltrúar atvinnurekenda:

Birgir Björn Sigurjónsson
Gunnar Björnsson
Hrönn Pálsdóttir
- óskipað
- óskipað

Fulltrúar launafólks:

Árni Sigurjónsson
Eiríkur Jónsson
Gunnar Gunnarsson
Jens Andrésson
Ómar S. Harðarson

Framkvæmdastjórn **KOS** skipa:

Birgir Björn Sigurjónsson, Gunnar Gunnarsson, Hrönn Pálsdóttir og Ómar S. Harðarson

Skrifstofa **KOS**

Framkvæmdastjóri : Geir Thorsteinsson
Fulltrúi : Kristín Ósk Róbertsdóttir

Heimilisfang :

KJARARANNSÓKNARNEFND OPINBERRA STARFSMANNA
BORGARTÚNI 21, 4. hæð.
105 REYKJAVÍK

Síminn hjá KOS er: 562 - 6030

Netfang: kos@simnet.is
Heimasíða á Netinu: <http://www.simnet.is/kos>

EFTIRPRENTUN ER HEIMIL ÚR RITINU, ENDA SÉ UPPRUNA GETIÐ

ISSN 1027-4081

KJARARANNSÓKNARNEFND OPINBERRA STARFSMANNA starfar samkvæmt 34. grein laga nr. 94/1986 um kjarasamninga opinberra starfsmanna, sem hljóðar þannig:

Á vegum þeirra aðila, sem lög þessi taka til, starfi nefnd er annist kjararannsóknir og aðra upplýsingaöflun vegna kjarasamninga.

Nefndin skal skipuð jafnmörgum fulltrúum stéttarfélaganna og vinnuveitenda samkvæmt nánari ákvæðum í reglugerð sem sett skal að fengnum tillögum heildarsamtaka opinberra starfsmanna og Sambands íslenskra sveitarfélaga.

Nefndin setur sér starfsreglur, m.a. um starfssvið og starfshætti.

Kostnaður við störf nefndarinnar greiðist úr ríkissjóði.

FRÉTTARIT KOS

Nr. 26

Apríl 2002

Tölur ársins 2001

Útgefandi: **Kjararannsóknarnefnd
opinberra starfsmanna**

Skrifstofa KOS: Borgartúni 21, 4. hæð
105 REYKJAVÍK
Sími: 562-6030

Netfang: kos@simnet.is

Heimasíða KOS: <http://www.simnet.is/kos>

Efnisyfirlit

1. Fréttarit KOS Nr. 26

1.1	Skýringar	5
1.2	Frá framkvæmdastjórn KOS	7
1.3	Listi yfir stéttarfélög og hópa sem eru í heftinu	8

2. Starfsmenn ríkis og Reykjavíkurborgar

2.1	Yfirlit um skiptingu og fjölda opinberra starfsmanna	9
2.2	Meðallaun opinberra starfsmanna ríkis og Reykjavíkurborgar	10
2.3	Dreifing dagvinnulauna stéttarfélaga og hópa eftir kyni í nóvember 2001 ..	12

3. Meðaltal dagvinnulauna, yfirvinnulauna og annarra launa

3.1	BSRB, ríkisstarfsmenn	17
3.2	BHM, ríkisstarfsmenn	23
3.3	Kennarasamband Íslands, ríkisstarfsmenn	33
3.4	Ýmsir, ríkisstarfsmenn	34
3.5	Starfsmenn Reykjavíkurborgar	42

4. Starfsmenn annarra sveitarfélaga

4.1	Inngangur	46
4.2	Meðaltöl launa hjá nokkrum sveitarfélögum árið 2001	47

5. Ýmislegt

5.1	Vísitala neysluverðs (framfærsluvísitala) með grunn 1981:	49
-----	---	----

1. Fréttarit KOS

1.1 Skýringar

Í þessari útgáfu eru starfsmenn ríkisins, sem fá greidd laun sem unnin eru í launavinnslukerfi ríkisins og starfsmenn Reykjavíkurborgar sem fá laun úr launavinnslukerfi Reykjavíkurborgar. Jafnframt eru í heftinu launaupplýsingar frá nokkrum öðrum sveitarfélögum en

Reykjavíkurborg. Áfram er unnið að því að taka inn hópa frá fleiri bæjar- og sveitarfélögum og fyrst um sinn er miðað við að fá tölur frá öllum kaupstöðum svo og öðrum sveitarfélögum, sem hafa fleiri en 1000 íbúa.

Skýringar:

GR. STG.	=	Greidd stöðugildi í dagvinnu (Stg.)
STÖÐUGILDI	=	Samanlagt starfshlutfall starfsmanna í hverjum hóp. (STG).
DAGVINNUL.	=	Laun og aðrar greiðslur sem greiddar eru fyrir dagvinnutíma, (Dl.)
YFIRVL.	=	Greidd laun fyrir yfirvinnu. (Yl.)
ÖNNUR L.	=	Öll önnur greidd laun á launaseðlum. (Öl.)
HEILDARL.	=	Summan af dagvinnulaunum, yfirvinnulaunum og öðrum launum (Hl.)
MEÐAL MÁN- AÐARLAUN	=	Summa dagvinnulauna deilt með summu stöðugilda fyrir hvert félag eða hóp

Breyting var gerð á vinnslu dagvinnulauna frá og með 1990. Öll laun sem tilheyra dagvinnu reiknast nú sem dagvinnulaun og um leið reiknast þau yfir í hlutfall stöðugilda og koma þar einnig til viðbótar.

Á undanförunum árum hafa orðið breytingar á aðild stéttarféлага að bandalögum og hópar starfsmanna, sem áður voru í tilteknu stéttarfélagi, hafa stofnað ný en dæmi eru einnig um stéttarfélög sem hafa sameinast. Þá hafa orðið umfangsmiklar breytingar á tímabilinu á hópunum

„Kjaradómur“ og „Utan félaga“ einkum vegna setningar laga nr. 120/1992 um Kjaradóm og kjaranefnd, sem leiddi m.a. til þess að stofnað var til hópsins „Kjaranefnd“ frá mars 1993. Í kjölfar setningar laga nr. 70/1996 og afleiddra lagabreytinga á sérlögum hafa enn orðið tilfærslur í hópunum „Kjaradómur“ og „Kjaranefnd“. Þessar breytingar hafa falið í sér að einstaklingar sem voru yfirleitt áður í stéttarfélögum (háskólamanna) hafa verið settir undir Kjaradóm og Kjaranefnd. Þá var með lögum ákveðið að frá 1. ágúst 1996

skyldu kennarar og skólástjórnendur við grunnskóla vera starfsmenn sveitarfélaga. Ekki eru gerðar sérstakar ráðstafanir til að reikna hópa, félög eða bandalög afturvirkir út frá breyttum forsendum. Í flestum tilvikum byrja slíkir hópar eða félög frá þeim tíma sem til þeirra er stofnað. Stjórnumerkt er við slík félög og

getið upphafstímabilis sem kaupmáttarútreikningur miðast við.

Athuga ber að meðaltölur launa sumarmánaða eru að jafnaði lægri en aðra mánuði vegna afleysinga og ráðninga sumarfólks.

Sjúkrahús Reykjavíkur fer frá Reykjavíkurborg yfir til ríkisins um áramótin 1998/1999. Tölur þeirra stéttarfélaga og hópa sem voru áður hjá Reykjavíkurborg en eru nú hjá ríkinu breytast við þetta ýmist til hækkunar eða lækkunar.

Ástæða er til að vekja sérstaka athygli á breyttum hlutföllum launategunda hjá mörgum stéttarfélögum, sem m.a. má rekja til nýja launakerfisins, sem tók gildi í kjölfar kjarasamninga sem gerðir voru árið 1997. Dagvinnulaunahluti þeirra eykst en yfirvinnuhluti minnkar.

Jafnframt geta verið sveiflur í launum á milli mánaða hjá einstökum stéttarfélögum og/eða hópum vegna afturvirkra leiðréttinga á launum.

1.2 Frá framkvæmdastjórn KOS

Í þessu hefti KOS eru upplýsingar á grunni frá og með árinu 1990. Eins og áður er unnið úr öllum greiddum launum frá viðkomandi launaskrifstofum.

Kosturinn við þessar upplýsingar, umfram þær sem fást við kaup og kjör annarra en þeirra er vinna hjá ríki og borg, er að hér er **ekki um úrtak** að ræða. Upplýsingarnar ná til launa, sem skráð eru í launavinnslukerfi ríkisins og launavinnslukerfi Reykjavíkurborgar. Þar með er ekki sagt að efnið sé gallalaust.

Tölurnar sýna laun allra þeirra, sem í starfi eru á hverjum tíma. Þetta getur valdið erfiðleikum í samanburði. T.d. lækka meðaldagvinnulaun flestra stéttarféлага yfir sumarmánuðina, vegna þess að sumarafleysingafólkið kemur inn í lægstu starfsaldursþrepin og verður að taka tillit til þess, þegar sumarmánuðirnir eru bornir saman við aðra mánuði.

Meðallaun og kaupmáttur lítilla hópa, geta breyst mjög mikið við það eitt, að nokkrir starfsmenn í efsta starfsaldursþrepi fara á eftirlaun en nýliðar taka við.

Stærsta vandamálið er þó að ná í samanburðarhæfar tölur um laun og aðrar greiðslur til launþega á almennum vinnumarkaði og þeirra opinberu starfsmanna

sem ekki eru í launavinnslukerfi ríkisins eða launavinnslukerfi Reykjavíkurborgar

KOS vinnur að því m.a. að finna leiðir til að endurbæta talnaefnið með tilliti til ofantalinna þátta.

Breytingar voru gerðar á útliti og innihaldi 20. Fréttarits KOS. Meðallaun á félög og hópa voru kyngreind, ef fjöldi karla eða kvenna nær 10 stöðugildum. Myndir sýna nú dreifingu dagvinnulauna innan hvers félags/hóps. Markmiðið með breytingunum er að gefa lesendum betri upplýsingar. Ætlunin er að fitja upp á frekari breytingum í framtíðinni.

1.3 Listi yfir stéttarfélög og hópa sem eru í heftinu

BSRB, ríkisstarfsmenn

Félag flugmálastarfsmanna ríkisins
Félag starfsmanna stjórnarráðsins
Landssamband Lögreglumanna
Sjúkraliðafélag Íslands
Starfsmannafélag ríkisútvarpsins
Starfsmannafélag sjónvarpsins
Starfsmannafélag ríkisstofnana, tæknih.
Starfsmannafélag ríkisst., skrifstofuh.
Starfsmannafélag ríkisstofnana, heilbr.h.
Starfsmannafélag ríkisstofnana, alls
Tollvarðafélag Íslands
BSRB félögin hjá ríkinu, alls

BHM, ríkisstarfsmenn

Félag tækniskólakennara og Kennarafélag KHÍ
(Kennaraháskóla Íslands)
Dýralæknafélag Íslands, Stéttarfélag sálfræðinga á Íslandi.
Stéttarfélag sjúkrahjálfara, Iðjuþjálfafélag Íslands og Stéttarfélag íslenskra félagsráðgjafa
Meinataeknafélag Íslands og Röntgentæknafélag Íslands
Félag íslenskra náttúrufræðinga
Fél. ísl. félagsvísindamanna og Félag íslenskra fræða - kjaradeild
Ljósmeðrafélag Íslands *
Stéttarfélag bókasafns- og upplýsingafræðinga
Félag fréttamanna
Félag háskólakennara
Félag háskólakennara á Akureyri
Fél. háskólam. starfsm. stjórnarráðsins
Félag íslenskra hjúkrunarfræðinga
Kjaraf. viðskipta- og hagfræðinga
Stéttarfél. háskólam. á matvæla- og næringarsviði
Stéttarfélag lögfræðinga
Útgarður, félag háskólamanna
Þroskaþjálfafélag Íslands *
BHM félögin hjá ríkinu, alls

Kennarasamband Íslands

Kennarasamband Íslands framhaldsskólar
Hið ísl. kennarafél., Framh.sk. *

Ýmsir hópar ríkisstarfsmanna

Félag íslenskra flugumferðarstjóra
Félag íslenskra leikskólakennara *
Kjarafélag tæknifræðinga
Læknafélag Íslands
Starfsmannafél. Sinfóníuhlj. Íslands
Stéttarfélag verkfræðinga
Kjaranefnd heilsugæslulækna
Kjaranefnd prófessorar
Kjaradómur
Kjaradómur, dómarar
Kjaranefnd
Leikarafélag Íslands *
Utan félaga
Prestafélag Íslands
Stéttarfélag íslenskra lyfjafræðinga
Starfsmannafélag Alþingis

Reykjavíkurborg

Starfsmannafélag Reykjavíkurborgar
án háskólahóps
Starfsmannafélag Reykjavíkurborgar, háskólahópur
Starfsmannafélag Reykjavíkurborgar alls
Félag íslenskra leikskólakennara hjá Rborg.
Sjúkraliðafélag Íslands
Landssamband slökkviliðsmanna
Háskólahópur innan BHM
Háskólahópur utan bandalaga
Kennarahópur hjá Rborg (KÍ, HÍK)

Önnur sveitarfélög.

Kos hefur m.a. að markmiði að safna upplýsingum frá öllum kaupstöðum og þeim sveitarfélögum sem hafa 1000 íbúa eða fleiri. Launakerfin sem notuð eru í sveitarfélögnum hafa verið undirbúin til þess að skila gögnum, eða þá að verið er að undirbúa þau til þess að geta skilað þessum gögnum til KOS. Jafnframt hafa sum sveitarfélögin verið að skipta um tölvukerfi. Kjararannsóknarnefnd (ASÍ og SA, skammstafað KRN) hefur unnið að því undanfarin ár að þróa prófunarforrit á þessi gögn og hefur, vegna barnsburðarorlofs hjá starfsmanni KOS, unnið að söfnun og tékkun á gögnum. Áfram munu KOS og KRN safna upplýsingum sameiginlega frá sveitarfélögnum og væntanlega koma tölur unnar úr þeim gögnum í næsta fréttarití KOS. Staða þessara mála skýrist betur í kaflanum um önnur sveitarfélög.

* Félag íslenskra leikskólakennara fer úr BSRB frá og með 1. janúar 2000.

* Leikarafélag Íslands fer úr BSRB frá og með 1. janúar 2000.

* Hið ísl. kennarafél., framh.sk. fer út úr BHM og í Kennarasamband Íslands er það tók formlega til starfa 1. janúar 2000.

2. Starfsmenn ríkis og Reykjavíkurborgar

Hér á eftir fer yfirlit um samsetningu hópa og bandalaga skipt eftir kyni, upplýsingar um meðallaun og að síðustu

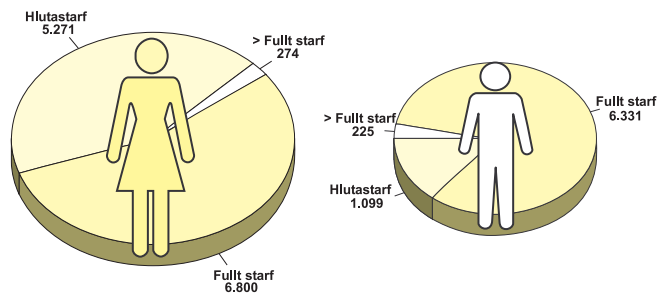
dreifing dagvinnulauna karla og kvenna skipt eftir stéttarfélögum/hópum.

2.1 Yfirlit um skiptingu og fjölda opinberra starfsmanna ríkis og Reykjavíkurborgar í nóvember 2001

Alls voru 20.000 einstaklingar í gagnasafninu í nóvember 2001. Það svarar til tæplega 13 % af fjölda vinnandi manna á

Íslandi. Konur voru 12.345 og karlar voru 7.655.

Mynd 2.1.1. Skipting fjölda eftir kyni og hlutfalli starfs



Taflan hér á eftir sýnir skiptingu starfsmanna eftir kyni og starfshlutfalli innan bandalaga og hópa. Eingöngu er um að ræða ríkisstarfsmenn neðangreindra bandalaga og hópa.

Tölurnar fyrir Reykjavíkurborg sýna skiptingu allra opinberra starfsmanna Reykjavíkurborgar.

Tafla 2.1.1 Skipting fjölda eftir hópum, kynjum og hlutfalli starfs.

Hópur	Kyn	Hlutastarf		Fullt starf		>Fullt starf		Samtölur	
		Fjöldi	Hlutfall	Fjöldi	Hlutfall	Fjöldi	Hlutfall	Fjöldi	Hlutfall
BSRB ríkisstarfsmenn	Karlar	357	15,08%	1.911	80,74%	99	4,18%	2.367	100,00%
	Konur	2.070	48,77%	2.082	49,06%	92	2,17%	4.244	100,00%
BHM ríkisstarfsmenn	Karlar	195	13,23%	1.241	84,19%	38	2,58%	1.474	100,00%
	Konur	1.493	45,28%	1.705	51,71%	99	3,00%	3.297	100,00%
Kennarasamband Íslands	Karlar	63	8,99%	633	90,30%	5	0,71%	701	100,00%
	Konur	148	22,80%	499	76,89%	2	0,31%	649	100,00%
Ýmsir ríkisstarfsmenn	Karlar	170	10,20%	1.430	85,83%	66	3,96%	1.666	100,00%
	Konur	88	16,64%	424	80,15%	17	3,21%	529	100,00%
Starfsmenn Reykjavíkurborgar	Karlar	314	21,70%	1.116	77,13%	17	1,17%	1.447	100,00%
	Konur	1.472	40,60%	2.090	57,64%	64	1,77%	3.626	100,00%

Hlutfallstölur eru reiknaðar af heildarfjölda einstaklinga innan hvers kyns innan hvers hóps eða bandalags

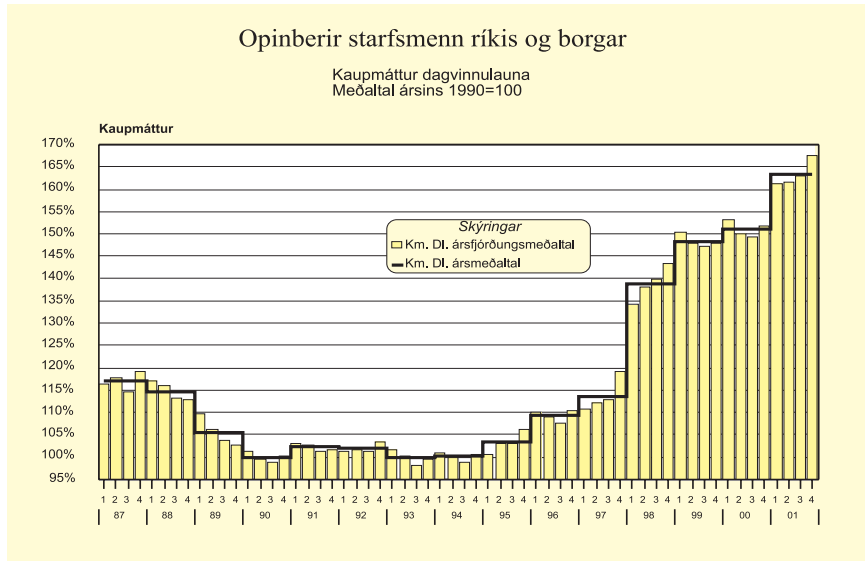
2.2 Meðallaun opinberra starfsmanna ríkis og Reykjavíkurborgar frá og með 1. ársfjórðungi 1987. Kaupmáttur miðast við meðaltal ársins 1990 = 100

Ár	Stg.	DI.	Breyting	HI.	Breyting	Km.DI	Km.HI.
1987	16.805,15	49.904		71.855		117,12	115,94
1988	17.515,13	61.496	23,23%	87.804	22,20%	114,76	112,65
1989	18.064,45	68.203	10,91%	97.777	11,36%	105,41	103,89
1990	18.486,49	74.761	9,62%	108.744	11,22%	100,00	100,00
1991	18.497,11	81.604	9,15%	121.686	11,90%	102,21	104,78
1992	19.011,68	84.693	3,79%	126.520	3,97%	102,01	104,77
1993	19.093,22	86.323	1,92%	128.262	1,38%	99,93	102,08
1994	19.539,24	87.785	1,69%	132.140	3,02%	100,06	103,55
1995	19.856,16	92.178	5,00%	138.914	5,13%	103,36	107,09
1996	19.786,59	99.605	8,06%	150.291	8,19%	109,23	113,31
1997	19.016,52	105.545	5,96%	160.072	6,51%	113,71	118,56
1998	17.511,81	131.229	24,33%	189.300	18,26%	138,99	137,84
1999	16.845,24	144.540	10,14%	207.022	9,36%	148,30	146,03
2000	17.980,55	154.867	7,14%	223.304	7,86%	151,11	149,79
2001	17.910,40	178.289	15,12%	252.606	13,12%	163,51	159,27

Ár	Ársfj.	Stg.	DI.	Breyting	HI.	Breyting	Km.DI	Km.HI.
1987	1	16.278,38	45.924		67.405		116,34	117,40
	2	16.902,54	48.539	5,69%	71.362	5,87%	117,77	119,04
	3	17.192,63	49.911	2,83%	67.825	-4,96%	114,64	107,10
	4	16.847,04	55.113	10,42%	80.764	19,08%	119,25	120,15
1988	1	16.921,24	57.982	5,21%	84.801	5,00%	117,16	117,81
	2	17.526,45	60.208	3,84%	86.140	1,58%	116,16	114,25
	3	18.013,09	63.401	5,30%	85.895	-0,28%	113,09	105,34
	4	17.599,75	64.208	1,27%	94.302	9,79%	112,71	113,80
1989	1	17.743,25	64.779	0,89%	95.078	0,82%	109,56	110,56
	2	18.210,10	67.116	3,61%	96.240	1,22%	106,13	104,63
	3	18.495,68	68.825	2,55%	94.171	-2,15%	103,70	97,55
	4	17.808,75	72.078	4,73%	105.782	12,33%	102,84	103,76
1990	1	18.022,80	73.616	2,13%	105.445	-0,32%	101,17	99,63
	2	18.304,75	74.121	0,69%	107.576	2,02%	99,63	99,41
	3	19.252,42	74.731	0,82%	102.054	-5,13%	98,85	92,80
	4	18.366,00	76.555	2,44%	120.158	17,74%	100,35	108,29
1991	1	17.878,81	79.648	4,04%	119.665	-0,41%	103,07	106,46
	2	18.667,43	81.055	1,77%	121.795	1,78%	102,83	106,23
	3	19.288,88	82.025	1,20%	114.704	-5,82%	101,33	97,42
	4	18.153,31	83.649	1,98%	130.983	14,19%	101,61	109,39
1992	1	18.659,89	83.934	0,34%	125.462	-4,22%	101,42	104,23
	2	19.206,39	84.287	0,42%	127.366	1,52%	101,76	105,72
	3	19.584,69	84.367	0,09%	117.116	-8,05%	101,43	96,80
	4	18.595,74	86.217	2,19%	136.610	16,65%	103,48	112,72
1993	1	18.531,27	86.341	0,14%	127.949	-6,34%	101,57	103,48
	2	19.210,56	85.963	-0,44%	127.954	0,00%	100,39	102,73
	3	19.799,55	85.587	-0,44%	119.030	-6,97%	98,32	94,01
	4	18.831,49	87.448	2,17%	138.590	16,43%	99,53	108,44
1994	1	18.910,64	88.049	0,69%	130.674	-5,71%	100,78	102,83
	2	19.690,19	87.544	-0,57%	134.501	2,93%	99,94	105,56
	3	20.252,67	86.956	-0,67%	122.102	-9,22%	98,88	95,46
	4	19.303,45	88.641	1,94%	141.699	16,05%	100,72	110,69
1995	1	17.890,62	89.188	0,62%	134.113	-5,35%	100,53	103,93
	2	20.408,56	91.493	2,58%	140.400	4,69%	103,17	108,85
	3	21.116,89	92.109	0,67%	128.459	-8,50%	103,03	98,78
	4	20.008,56	95.622	3,81%	152.724	18,89%	106,35	116,77
1996	1	20.040,51	99.458	4,01%	149.069	-2,39%	110,15	113,50
	2	20.781,34	99.189	-0,27%	150.624	1,04%	109,06	113,86
	3	20.330,94	98.658	-0,54%	138.882	-7,80%	107,69	104,22
	4	17.993,58	101.318	2,70%	164.159	18,20%	110,25	122,81
1997	1	18.517,27	101.711	0,39%	159.611	-2,77%	110,60	115,92
	2	19.308,21	103.895	2,15%	164.881	3,30%	112,22	118,90
	3	19.843,03	105.106	1,17%	153.364	-6,99%	112,88	110,00
	4	18.397,58	111.610	6,19%	182.644	19,09%	119,21	130,01
1998	1	16.957,25	126.325	13,18%	182.724	0,04%	134,40	133,66
	2	17.644,34	130.526	3,33%	189.726	3,83%	137,94	137,85
	3	18.127,02	132.073	1,19%	179.207	-5,54%	140,04	130,63
	4	17.318,64	135.862	2,87%	205.869	14,88%	143,41	149,40
1999	1	16.361,06	143.226	5,42%	202.797	-1,49%	150,30	146,31
	2	16.994,97	142.853	-0,26%	206.290	1,72%	147,82	146,75
	3	17.386,24	144.524	1,17%	196.093	-4,94%	147,22	137,32
	4	16.638,70	147.573	2,11%	223.344	13,90%	147,95	153,94

Ár	Ársfj.	Stg.	DI.	Breyting	HI.	Breyting	Km.DI	Km.HI.
2000	1	17.625,33	154.535	4,72%	221.613	-0,78%	153,30	151,14
	2	18.300,45	153.530	-0,65%	223.291	0,76%	150,17	150,15
	3	18.472,61	153.764	0,15%	212.719	-4,73%	149,47	142,16
	4	17.523,80	157.760	2,60%	236.176	11,03%	151,63	156,06
2001	1	17.449,29	168.690	6,93%	238.655	1,05%	161,18	156,77
	2	18.030,74	174.515	3,45%	252.625	5,85%	161,64	160,87
	3	18.521,30	180.920	3,67%	245.241	-2,92%	163,15	152,04
	4	17.640,28	188.881	4,40%	274.121	11,78%	167,68	167,30

Mynd 2.2.1



Ath að stór hópur ríkisstarfsmanna fellur út úr gagnasafni KOS frá og með áramótum 1996 -1997, s.s. starfsmenn Pósts og Síma og grunnskólakennarar annarra sveitarfélaga en Reykjavíkurborgar.

Sjúkrahús Reykjavíkur fer frá Reykjavíkurborg yfir til ríkisins um áramótin 1998/1999. Tölur þeirra stéttarfélaga og hópa sem voru áður hjá Reykjavíkurborg en eru nú hjá ríkinu breytast við þetta ýmist til hækkunar eða lækkunar.

Ástæða er til að vekja sérstaka athygli á breyttum hlutföllum launategunda hjá mörgum stéttarfélögum, sem m.a. má rekja til nýja launakerfisins, sem tók gildi í kjölfar kjarasamninga sem gerðir voru árið 1997. Dagvinnu-launahluti þeirra eykst en yfirvinnuhluti minnkar.

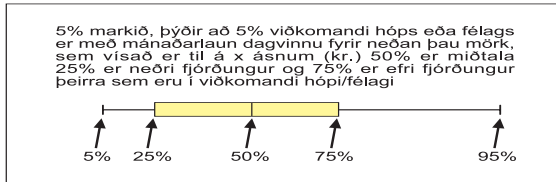
Jafnframt geta verið sveiflur í launum á milli mánaða hjá einstökum stéttarfélögum og/eða hópum vegna afturvirkra leiðréttinga á launum.

2.3 Dreifing dagvinnulauna stéttarfélaga og hópa eftir kyni í nóvember 2001

Hér á eftir eru sýnd gröf, þar sem er búið að reikna dreifingu mánaðarlauna í dagvinnu hjá stéttarfélögum/hópum. Miðað er við nóvembermánuð 2001 og dagvinnulaun mánaðarins eru eins og áður

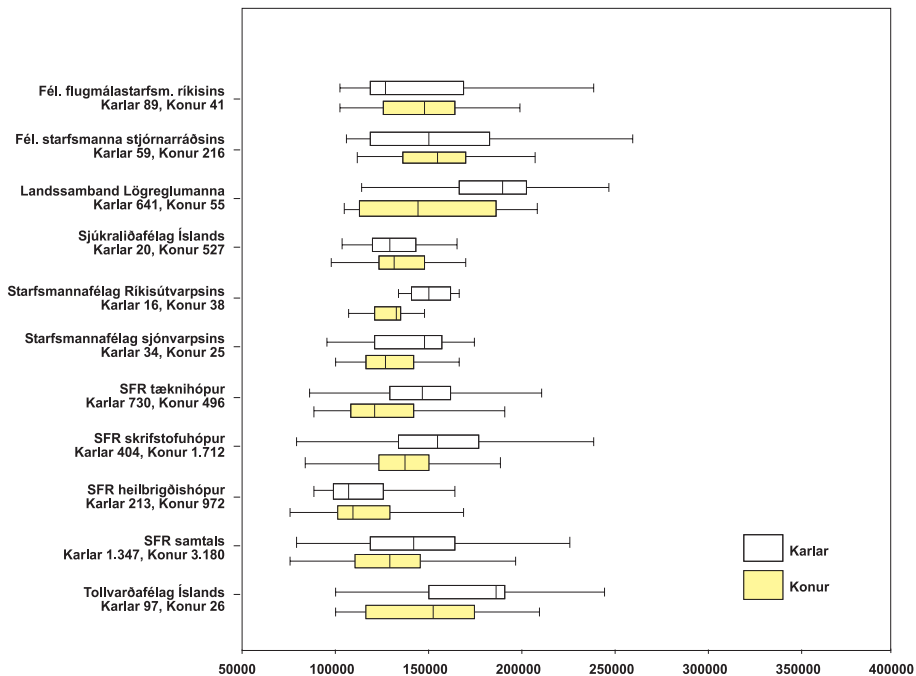
uppreiknuð miðað við fullt starf. Starfsmönnum með minna en 10% starf var sleppt. Fjöldi starfsmanna af hvoru kyni er sýndur fyrir neðan nafn hvers félags/hóps.

Skýring:



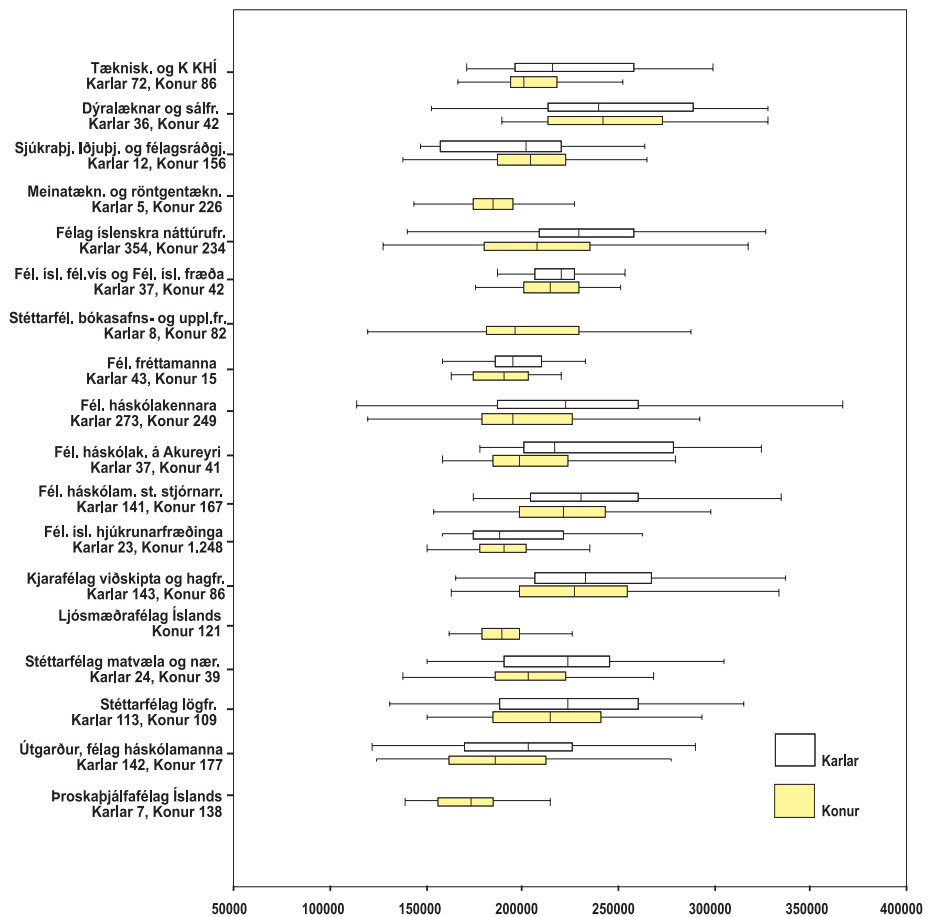
Mynd 2.3.1

*Dreifing dagvinnulauna í nóvember 2001
BSRB ríkisstarfsmenn*



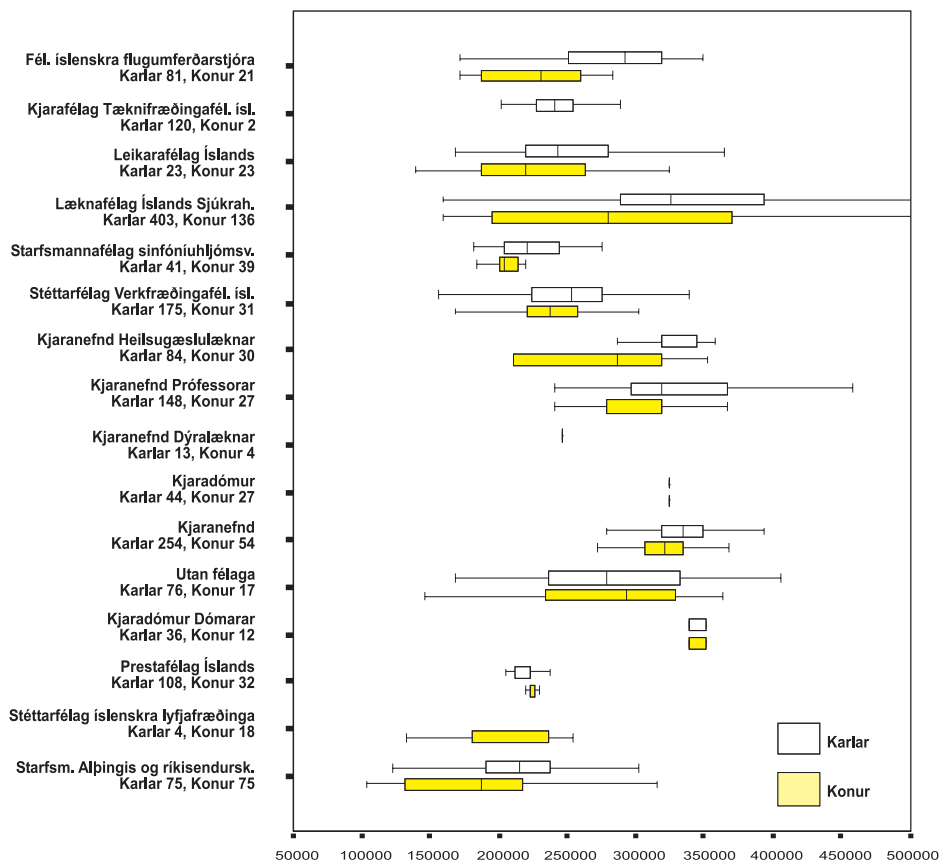
Mynd 2.3.2

*Dreifing dagvinnulauna í nóvember 2001
BHM ríkisstarfsmenn*



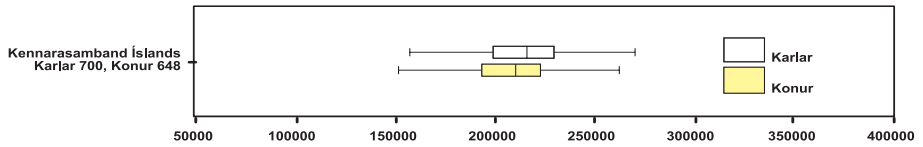
Mynd 2.3.3

*Dreifing dagvinnulauna í nóvember 2001
ÝMSIR ríkisstarfsmenn*



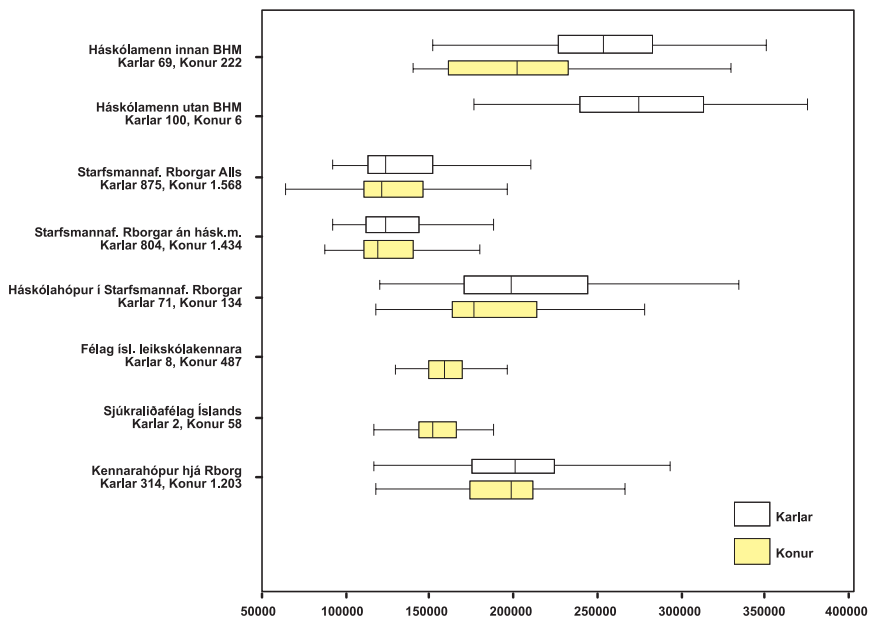
Mynd 2.3.4

*Dreifing dagvinnulauna í nóvember 2001
Kennarasamband Íslands ríkisstarfsmenn*



Mynd 2.3.5

*Dreifing dagvinnulauna í nóvember 2001
Starfsmenn Reykjavíkurborgar*



3. Meðaltal dagvinnulauna, yfirvinnulauna og annarra launa, ásamt heildarlaunum og kaupmætti dagvinnulauna, skipt eftir kyni

Athuga ber að önnur laun fyrir apríl og desember eru heldur hærrí en aðra mánuði í eftirtöldum töflum því orlofsframlag, desemberuppbót og óregluleg önnur laun eru meðtalin.

Sjúkrahús Reykjavíkur fer frá Reykjavíkurborg yfir til ríkisins um áramótin 1998/1999. Tölur þeirra stéttarfélaganna og hópa sem voru áður hjá Reykjavíkurborg en eru nú hjá ríkinu breytast við þetta ýmist til hækkunar eða lækkunar.

Ástæða er til að vekja sérstaka athygli á breyttum hlutföllum launategunda hjá mörgum stéttarfélögum, sem m.a. má rekja til nýja launakerfisins, sem tók gildi í kjölfar kjarasamninga sem gerðir voru árið 1997. Dagvinnulaunahluti þeirra eykst en yfirvinnuhluti minnkar.

Jafnframt geta verið sveiflur í launum á milli mánaða hjá einstökum stéttarfélögum og/eða hópum vegna afturvirkra leiðréttinga á launum.

Hér á næstu síðum eru útreiknuð meðallaun eftir félögum, hópum og bandalögum ásamt kaupmætti dagvinnulauna.

Kaupmáttur miðar við janúar 1987 = 100, nema annað sé tekið sérstaklega fram.

Ekki eru birtar kynskiptar meðaltölur fyrir hópa sem hafa færri en 10 stöðugildi annaðhvort hjá körlum eða konum.

Skýringar:

MA = mánuður	DL = dagvinnulaun
YL = yfirvinnulaun	ÖL = önnur laun
HL = heildarlaun	Km.dl. = kaupmáttur dagvinnulauna
STG = stöðugildi	

Félag flugmálastarfsmanna ríkisins

		<i>Karlar</i>						<i>Allir</i>					
MA	AR	STG	DL	YL	OL	HL	STG	DL	YL	OL	HL	Km.dl.	
1	2001	76,60	112.404	86.295	39.642	238.341	113,83	114.864	78.410	29.856	223.129	124,85	
2	2001	77,38	112.994	80.686	38.961	232.641	115,98	114.990	74.087	28.524	217.602	124,76	
3	2001	79,38	144.491	85.830	46.605	276.926	117,30	146.112	82.111	34.719	262.942	157,60	
4	2001	77,95	143.519	83.882	59.905	287.305	114,55	145.831	78.161	47.340	271.333	155,39	
5	2001	88,95	142.274	79.031	55.824	277.129	127,19	144.131	75.282	46.922	266.335	151,45	
6	2001	93,63	142.232	78.369	41.001	261.602	135,04	143.732	72.358	32.028	248.118	148,76	
7	2001	91,79	142.650	85.113	43.781	271.544	138,01	143.101	73.154	32.799	249.054	146,97	
8	2001	91,43	143.112	83.743	40.253	267.107	137,00	143.294	74.116	30.559	247.969	146,70	
9	2001	86,45	144.240	89.065	42.129	275.434	125,78	145.471	79.376	32.716	257.563	147,95	
10	2001	87,91	144.223	89.186	44.321	277.730	126,50	145.627	80.873	34.405	260.905	147,16	
11	2001	87,03	146.119	81.708	48.107	275.934	125,43	147.232	75.691	37.583	260.505	148,27	
12	2001	85,03	143.949	75.203	79.217	298.369	123,66	146.277	67.471	70.970	284.718	146,63	

Félag starfsmanna stjórnarráðsins

		<i>Karlar</i>						<i>Allir</i>					
MA	AR	STG	DL	YL	ÖL	HL	STG	DL	YL	ÖL	HL	Km.dl.	
1	2001	58,82	144.358	99.713	9.729	253.800	281,37	143.898	38.276	2.495	184.669	138,21	
2	2001	54,71	144.761	96.195	10.570	251.526	273,42	144.275	36.774	2.540	183.589	138,32	
3	2001	57,28	157.605	104.668	12.336	274.609	276,76	155.153	40.667	3.043	198.864	147,87	
4	2001	56,29	155.483	114.197	31.516	301.197	269,51	155.636	45.708	22.369	223.712	146,54	
5	2001	60,10	153.248	100.932	11.410	265.590	280,62	154.648	40.674	2.701	198.022	143,60	
6	2001	67,41	150.883	88.308	11.687	250.878	299,43	150.857	35.704	2.934	189.494	137,96	
7	2001	67,89	149.002	83.431	21.417	253.850	303,52	150.316	34.201	5.485	190.002	136,41	
8	2001	65,10	151.037	79.114	12.501	242.652	301,24	152.492	31.228	3.003	186.723	137,95	
9	2001	65,17	155.608	99.968	13.781	269.357	274,76	155.123	43.820	3.715	202.658	139,41	
10	2001	56,02	159.081	95.639	15.461	270.181	263,49	156.662	38.400	3.630	198.693	139,89	
11	2001	57,39	158.854	112.634	15.090	286.578	260,76	157.664	43.695	3.668	205.028	140,30	
12	2001	56,69	160.217	86.982	50.976	298.176	264,91	156.930	43.237	39.587	239.754	139,00	

		<i>Konur</i>				
STG	DL	YL	OL	HL		
37,23	119.925	62.188	9.723	191.836		
38,60	118.991	60.861	7.605	187.457		
37,92	149.508	74.324	9.834	233.665		
36,60	150.756	65.979	20.581	237.316		
38,25	148.450	66.562	26.219	241.231		
41,42	147.123	58.772	11.743	217.637		
46,23	143.996	49.408	10.995	204.399		
45,56	143.659	54.798	11.108	209.564		
39,34	148.177	58.082	12.028	218.287		
38,60	148.827	61.937	11.821	222.585		
38,40	149.753	62.051	13.729	225.533		
38,63	151.402	50.451	52.814	254.666		

		<i>Konur</i>				
STG	DL	YL	ÖL	HL		
222,55	143.777	22.039	582	166.399		
218,71	144.153	21.910	531	166.595		
219,47	154.513	23.963	618	179.094		
213,22	155.676	27.626	19.953	203.256		
220,52	155.029	24.250	327	179.606		
232,02	150.849	20.419	391	171.659		
235,63	150.695	20.017	895	171.607		
236,14	152.894	18.026	384	171.304		
209,59	154.972	26.360	585	181.917		
207,47	156.009	22.946	436	179.391		
203,37	157.329	24.240	445	182.013		
208,22	156.035	31.328	36.486	223.850		

BSRB, ríkisstarfsmenn

Landssamband lögreglumanna

		Karlar					Allir					Konur					
MA	AR	STG	DL	YL	ÖL	HL	STG	DL	YL	ÖL	HL	Km.dl.	STG	DL	YL	ÖL	HL
1	2001	625,70	141,593	94,890	51,610	288,094	674,52	139,922	93,432	51,046	284,400	128,61	48,82	118,501	74,737	43,820	237,058
2	2001	624,08	140,939	90,769	46,244	277,951	671,27	139,482	89,425	45,772	274,680	127,97	47,19	120,220	71,661	39,532	231,413
3	2001	614,25	139,906	81,723	44,079	265,708	662,82	138,408	80,197	43,365	261,971	126,23	48,57	119,472	60,906	34,335	214,713
4	2001	614,64	140,597	97,515	56,935	295,047	665,49	138,890	95,594	56,159	290,644	125,14	50,85	118,261	72,379	46,786	237,426
5	2001	667,42	143,867	94,661	46,934	285,462	725,89	141,881	92,526	45,893	280,301	126,07	58,47	119,210	68,163	34,011	221,384
6	2001	707,57	141,191	88,668	49,422	279,280	777,41	138,773	86,085	47,836	272,693	121,45	69,84	114,274	59,922	31,767	205,963
7	2001	713,03	156,205	80,451	47,953	284,609	784,72	153,408	78,284	47,277	278,989	133,23	71,69	125,583	56,732	40,553	222,869
8	2001	696,16	156,813	85,206	54,713	296,732	767,42	153,825	83,669	54,178	291,672	133,16	71,24	124,629	68,649	48,950	242,227
9	2001	641,56	186,176	93,413	59,796	339,385	693,56	183,531	92,032	59,931	335,494	157,83	52,00	150,899	74,988	61,599	287,486
10	2001	639,13	186,811	103,942	54,005	344,757	693,21	184,127	100,923	52,842	337,892	157,34	54,08	152,415	65,249	39,097	256,761
11	2001	643,48	186,775	99,449	56,580	342,805	697,12	184,017	96,989	55,513	336,520	156,70	53,64	150,929	67,478	42,710	261,117
12	2001	642,23	187,053	97,095	100,493	384,642	697,38	184,299	94,870	99,156	378,325	156,22	55,15	152,231	68,961	83,579	304,772

Sjúkraliðafélag Íslands *Kaupmátur mældast við 01/1992 = 100,00*

		Karlar					Allir					Konur					
MA	AR	STG	DL	YL	ÖL	HL	STG	DL	YL	ÖL	HL	Km.dl.	STG	DL	YL	ÖL	HL
1	2001	19,13	115,636	52,323	30,080	198,038	482,46	115,256	40,334	23,321	178,911	139,59	463,33	115,240	39,839	23,042	178,121
2	2001	16,90	115,142	40,907	26,150	182,199	493,53	115,280	30,067	21,102	166,448	139,37	476,63	115,285	29,682	20,923	165,890
3	2001	17,12	115,601	58,930	35,021	209,552	482,00	115,241	36,186	23,157	174,584	138,50	464,88	115,228	35,348	22,720	173,296
4	2001	17,34	115,964	71,516	41,105	228,585	486,12	115,459	61,858	30,336	207,653	137,08	468,78	115,440	61,501	29,938	206,879
5	2001	17,53	115,577	52,832	29,178	197,587	493,28	115,541	46,762	21,543	183,846	135,28	475,75	115,540	46,538	21,262	183,339
6	2001	18,81	114,728	44,294	22,468	181,490	500,15	115,527	39,389	18,322	173,238	133,23	481,34	115,558	39,197	18,160	172,915
7	2001	24,92	114,188	32,803	20,511	167,502	503,16	115,519	26,927	15,628	158,074	132,19	478,24	115,588	26,621	15,373	157,582
8	2001	19,66	115,020	42,249	17,871	175,140	486,11	115,567	35,921	15,697	167,186	131,83	466,45	115,590	35,655	15,606	166,851
9	2001	20,32	117,983	34,675	26,219	178,877	532,25	116,808	32,332	19,246	168,385	132,37	511,92	116,761	32,239	18,969	167,969
10	2001	15,56	117,008	34,658	30,500	182,166	361,95	116,605	26,132	22,780	165,518	131,30	346,38	116,587	25,749	22,434	164,770
11	2001	15,12	133,569	44,279	49,188	227,036	375,85	136,506	33,953	31,056	201,516	153,18	360,74	136,629	33,521	30,296	200,446
12	2001	19,70	133,437	66,299	124,823	324,559	445,40	137,068	54,194	121,685	312,946	153,09	425,71	137,236	53,634	121,539	312,409

Starfsmannafélag ríkisútvarpsins

		<i>Karlar</i>						<i>Allir</i>						<i>Konur</i>				
MA	AR	STG	DL	YL	ÖL	HL	STG	DL	YL	ÖL	HL	Km.dl.	STG	DL	YL	ÖL	HL	
1	2001	22,00	125.670	71.352	9.505	206.526	65,71	121.855	46.385	4.510	172.750	119,01	43,72	119.935	33.823	1.996	155.754	
2	2001	20,43	129.044	52.650	9.215	190.908	63,20	123.123	36.069	4.470	163.663	120,03	42,76	120.295	28.147	2.203	150.645	
3	2001	17,43	132.273	59.902	6.384	198.558	61,37	123.533	41.294	3.208	168.034	119,72	43,94	120.066	33.911	1.947	155.925	
4	2001	17,29	146.150	79.004	20.296	245.449	62,26	136.497	52.394	14.466	203.358	130,69	44,97	132.787	42.166	12.226	187.179	
5	2001	17,55	144.837	67.675	22.221	234.733	63,27	135.540	44.546	14.753	194.839	127,98	45,72	131.971	35.669	11.887	179.527	
6	2001	23,69	134.542	54.468	16.662	205.672	70,42	132.683	38.272	12.836	183.791	123,39	46,73	131.741	30.062	10.897	172.700	
7	2001	22,52	132.797	41.436	5.580	179.814	71,66	131.949	33.717	3.790	169.456	121,77	49,14	131.561	30.179	2.970	164.710	
8	2001	21,93	137.646	48.447	7.698	193.791	69,52	134.472	36.854	4.900	176.226	123,70	47,59	133.009	31.510	3.610	168.130	
9	2001	17,05	149.807	79.380	12.789	241.976	60,17	138.196	48.084	5.655	191.935	126,29	43,12	133.605	35.706	2.834	172.144	
10	2001	15,82	150.619	83.542	10.375	244.536	58,27	138.422	48.985	5.035	192.442	125,69	42,46	133.878	36.112	3.045	173.035	
11	2001	15,82	150.221	73.839	11.661	235.721	52,12	138.184	45.906	6.056	190.145	125,04	36,30	132.939	33.736	3.614	170.290	
12	2001	16,14	155.548	68.531	51.186	275.265	52,17	140.593	42.086	47.423	230.102	126,63	36,03	133.892	30.238	45.737	209.867	

Starfsmannafélag sjónvarpsins

		<i>Karlar</i>						<i>Allir</i>						<i>Konur</i>				
MA	AR	STG	DL	YL	ÖL	HL	STG	DL	YL	ÖL	HL	Km.dl.	STG	DL	YL	ÖL	HL	
1	2001	46,80	126.413	71.506	13.860	211.780	69,16	125.633	69.833	11.523	206.989	124,13	22,36	124.000	66.330	6.632	196.962	
2	2001	42,85	127.506	48.795	13.585	189.886	66,60	125.867	50.737	10.956	187.561	124,13	23,74	122.910	54.242	6.213	183.365	
3	2001	43,08	128.767	60.978	12.666	202.411	69,54	126.790	57.346	9.672	193.808	124,30	26,46	123.572	51.433	4.798	179.803	
4	2001	39,44	144.973	79.642	25.350	249.965	63,57	140.501	75.714	21.345	237.560	136,08	24,13	133.191	69.296	14.800	217.287	
5	2001	35,69	146.113	68.993	26.970	242.076	58,97	140.679	69.140	23.012	232.832	134,37	23,28	132.346	69.366	16.943	218.655	
6	2001	36,00	146.183	66.094	23.927	236.203	61,78	139.468	64.465	20.561	224.494	131,20	25,79	130.092	62.192	15.863	208.147	
7	2001	36,63	145.509	46.496	11.779	203.784	62,08	139.381	48.372	9.398	197.151	130,11	25,46	130.562	51.071	5.972	187.605	
8	2001	37,21	145.815	40.565	10.801	197.181	61,30	140.016	40.111	8.011	188.137	130,29	24,09	131.056	39.409	3.700	174.165	
9	2001	35,65	146.424	47.259	14.504	208.186	57,78	141.637	50.019	11.902	203.559	130,93	22,13	133.928	54.465	7.712	196.105	
10	2001	34,73	145.599	46.437	18.378	210.414	54,83	141.072	50.209	14.566	205.848	129,58	20,10	133.250	56.728	7.979	197.957	
11	2001	33,83	146.369	49.773	18.209	214.351	53,90	140.943	51.200	14.892	207.035	129,02	20,07	131.799	53.604	9.303	194.706	
12	2001	33,25	145.605	44.288	54.832	244.725	54,58	140.696	44.199	50.266	235.162	128,19	21,34	133.048	44.061	43.151	220.260	

Starfsmannafélag ríkisstofnana, tæknihópur

		<i>Karlar</i>					<i>Allir</i>					<i>Konur</i>					
AR	STG	DL	YL	ÖL	HL	STG	DL	YL	ÖL	HL	Km.dl.	STG	DL	YL	ÖL	HL	
1	2001	709,45	132.787	59.379	12.366	204.533	1.133,45	126.742	50.724	10.320	187.786	133,42	424,01	116.627	36.241	6.897	159.765
2	2001	697,93	133.344	61.826	11.756	206.926	1.103,75	127.664	51.091	9.914	188.669	134,15	405,82	117.895	32.629	6.745	157.269
3	2001	696,14	143.109	62.828	13.463	219.400	1.098,32	137.133	53.303	11.414	201.850	143,25	402,18	126.790	36.815	7.868	171.473
4	2001	693,32	143.240	64.531	34.827	242.598	1.096,57	137.165	55.935	32.508	225.608	141,55	403,26	126.719	41.157	28.522	196.397
5	2001	735,15	142.413	63.194	22.779	228.386	1.180,36	136.638	53.445	20.881	210.964	139,05	445,21	127.101	37.348	17.745	182.195
6	2001	833,85	139.316	57.946	13.042	210.304	1.369,14	133.340	48.617	10.836	192.793	133,65	535,29	124.031	34.084	7.400	165.515
7	2001	834,52	138.660	58.104	10.795	207.559	1.380,46	132.608	46.410	9.201	188.218	131,90	545,94	123.356	28.534	6.764	158.654
8	2001	811,13	140.167	52.936	10.083	203.186	1.327,18	134.022	43.532	8.795	186.349	132,88	516,06	124.363	28.750	6.770	159.884
9	2001	701,10	145.533	68.650	12.660	226.843	1.108,96	139.647	57.345	10.988	207.979	137,55	407,86	129.529	37.913	8.112	175.553
10	2001	697,36	146.948	70.175	13.920	231.043	1.111,43	141.174	59.398	11.951	212.523	138,16	414,07	131.449	41.248	8.634	181.331
11	2001	692,36	147.848	70.195	14.775	232.818	1.104,74	141.848	59.403	12.600	213.852	138,35	412,38	131.776	41.285	8.947	182.008
12	2001	694,68	147.604	58.838	50.519	256.960	1.106,14	141.718	50.352	48.531	240.601	137,58	411,45	131.782	36.024	45.174	212.980

Starfsmannafélag ríkisstofnana, skrifstofuhópur

		<i>Karlar</i>					<i>Allir</i>					<i>Konur</i>					
AR	STG	DL	YL	ÖL	HL	STG	DL	YL	ÖL	HL	Km.dl.	STG	DL	YL	ÖL	HL	
1	2001	365,67	147.013	66.055	7.171	220.239	1.883,56	129.903	32.248	2.675	164.826	136,10	1.517,89	125.781	24.104	1.592	151.476
2	2001	368,95	146.374	72.135	5.703	224.212	1.873,41	130.278	34.951	2.138	167.368	136,24	1.504,47	126.331	25.833	1.264	153.428
3	2001	366,36	156.473	76.269	6.888	239.629	1.889,12	139.470	36.465	2.537	178.473	145,00	1.522,76	135.380	26.889	1.490	163.759
4	2001	355,60	157.944	72.264	26.800	257.009	1.883,00	139.799	35.810	22.084	197.694	143,58	1.527,39	135.575	27.323	20.986	183.884
5	2001	388,60	155.306	70.188	15.085	240.578	1.975,93	139.575	35.905	12.035	187.515	141,37	1.587,33	135.724	27.512	11.289	174.525
6	2001	446,32	151.239	65.722	6.832	223.793	2.230,21	137.237	33.456	2.774	173.467	136,90	1.783,89	133.734	25.384	1.759	160.876
7	2001	446,77	150.544	62.805	4.424	217.772	2.246,32	137.060	30.553	2.259	169.872	135,68	1.799,54	133.713	22.546	1.722	157.980
8	2001	426,71	152.920	65.996	5.194	224.110	2.169,36	138.288	30.996	2.335	171.618	136,45	1.742,65	134.705	22.426	1.635	158.765
9	2001	378,18	159.078	76.125	5.907	241.110	1.896,03	142.545	37.044	2.433	182.023	139,73	1.517,86	138.426	27.307	1.568	167.301
10	2001	376,32	161.674	77.149	5.923	244.746	1.894,01	145.390	37.305	2.764	185.459	141,61	1.517,69	141.352	27.425	1.981	170.758
11	2001	374,28	162.934	79.174	6.628	248.736	1.884,33	145.735	38.056	2.762	186.553	141,46	1.510,04	141.472	27.864	1.804	171.141
12	2001	369,60	163.479	74.769	43.253	281.501	1.874,55	145.901	35.439	38.956	220.297	140,97	1.504,95	141.584	25.780	37.901	205.265

Starfsmannafélag ríkisstofnana, heilbrigðishópur

MA	AR	Karlar					Allir						Konur				
		STG	DL	YL	ÖL	HL	STG	DL	YL	ÖL	HL	Km.dl.	STG	DL	YL	ÖL	HL
1	2001	148,82	103.188	43.765	23.946	170.899	842,04	103.675	39.103	18.722	161.499	114,95	693,22	103.779	38.102	17.600	159.481
2	2001	150,10	103.038	30.863	23.609	157.510	855,34	103.571	25.362	20.095	149.028	114,63	705,24	103.685	24.191	19.347	147.222
3	2001	150,70	109.432	33.074	26.135	168.641	796,62	110.477	26.774	23.529	160.781	121,55	645,92	110.721	25.305	22.921	158.947
4	2001	147,94	109.058	48.579	44.975	202.613	784,79	110.241	39.932	42.901	193.073	119,83	636,84	110.515	37.923	42.419	190.856
5	2001	155,84	113.688	45.281	35.894	194.864	855,27	114.798	42.010	31.325	188.133	123,05	699,43	115.046	41.281	30.307	186.633
6	2001	183,28	112.322	37.689	22.817	172.828	1.015,20	113.255	34.768	21.446	169.469	119,57	831,92	113.461	34.124	21.144	168.729
7	2001	185,66	112.548	28.274	22.632	163.454	1.035,82	113.521	25.753	21.196	160.470	118,93	850,16	113.733	25.203	20.882	159.818
8	2001	176,17	113.335	31.953	25.027	170.314	1.013,32	113.515	25.001	20.632	159.147	118,54	837,15	113.552	23.538	19.707	156.797
9	2001	148,21	115.145	36.861	32.119	184.126	801,02	116.120	30.577	27.248	173.945	120,47	652,81	116.341	29.150	26.142	171.633
10	2001	150,10	117.511	40.768	32.239	190.519	803,79	119.158	31.130	27.589	177.877	122,83	653,69	119.536	28.917	26.522	174.974
11	2001	162,26	116.304	32.386	33.058	181.748	827,75	118.830	29.152	28.392	176.374	122,07	665,49	119.446	28.364	27.254	175.063
12	2001	160,52	116.098	29.250	66.071	211.420	836,33	118.592	26.857	62.509	207.958	121,26	675,81	119.184	26.289	61.663	207.136

Starfsmannafélag ríkisstofnana, samtals

MA	AR	Karlar					Allir						Konur				
		STG	DL	YL	ÖL	HL	STG	DL	YL	ÖL	HL	Km.dl.	STG	DL	YL	ÖL	HL
1	2001	1.223,94	133.438	59.475	12.222	205.136	3.859,05	123.252	39.170	8.422	170.844	131,04	2.635,12	118.520	29.739	6.657	154.916
2	2001	1.216,98	133.556	61.132	11.383	206.072	3.832,50	123.565	37.459	8.385	169.409	131,13	2.615,53	118.916	26.445	6.990	152.351
3	2001	1.213,20	142.961	63.191	13.052	219.204	3.784,06	132.688	39.312	9.533	181.534	139,98	2.570,86	127.841	28.044	7.872	163.757
4	2001	1.196,86	143.384	64.857	33.696	241.937	3.764,36	132.869	42.532	29.460	204.862	138,48	2.567,49	127.968	32.125	27.486	187.579
5	2001	1.279,59	142.830	63.136	22.040	228.006	4.011,56	133.428	42.368	18.750	194.546	137,14	2.731,97	129.025	32.640	17.210	178.875
6	2001	1.463,45	139.572	57.781	12.372	209.724	4.614,55	130.805	38.243	9.274	178.321	132,41	3.151,10	126.733	29.169	7.835	163.737
7	2001	1.466,95	138.975	55.760	10.353	205.087	4.662,60	130.513	34.181	8.521	173.215	131,10	3.195,64	126.628	24.276	7.681	158.584
8	2001	1.414,01	140.673	54.263	10.469	205.405	4.509,86	131.466	33.338	8.347	173.151	131,64	3.095,86	127.261	23.781	7.378	158.419
9	2001	1.227,49	146.037	67.115	12.929	226.081	3.806,01	136.139	41.598	10.148	187.886	135,42	2.578,53	131.427	29.451	8.825	169.703
10	2001	1.223,78	147.866	68.713	13.708	230.286	3.809,23	138.625	42.448	10.683	191.756	137,02	2.585,45	134.250	30.016	9.251	173.517
11	2001	1.228,90	148.278	67.938	14.708	230.923	3.816,82	138.775	42.304	11.168	192.247	136,70	2.587,91	134.263	30.131	9.487	173.881
12	2001	1.224,80	148.265	59.768	50.365	258.397	3.817,02	138.705	37.880	46.891	223.477	135,99	2.592,21	134.188	27.539	45.250	206.977

BSRB, ríkisstarfsmenn

Tollvarðafélag Íslands

		Karlar				Allir				Konur							
MA	AR	STG	DL	YL	ÖL	HL	STG	DL	YL	ÖL	HL	STG	DL	YL	ÖL	HL	
1	2001	90,50	144,091	102,076	21,843	268,010	108,18	142,335	102,365	21,400	266,100	125,67	17,68	133,345	103,843	19,131	256,319
2	2001	90,50	144,291	92,825	23,746	260,862	108,00	142,642	94,042	23,579	260,263	125,72	17,50	134,118	100,336	22,712	257,166
3	2001	90,28	145,421	79,700	21,806	246,926	109,77	142,723	78,717	21,250	242,689	125,05	19,49	130,225	74,163	18,676	223,063
4	2001	92,86	144,529	88,287	32,036	264,851	116,31	140,290	85,608	31,644	257,543	121,43	23,45	123,506	75,001	30,095	228,602
5	2001	104,91	173,744	114,995	24,706	313,445	134,70	167,121	117,539	24,255	308,915	142,65	29,79	143,799	126,497	22,667	292,963
6	2001	106,30	169,078	100,346	35,907	305,331	143,58	160,921	98,299	35,716	294,936	135,29	37,28	137,663	92,462	35,170	265,295
7	2001	106,27	168,766	83,153	36,366	288,286	146,14	159,627	80,716	35,855	276,198	133,17	39,87	135,267	74,221	34,491	243,979
8	2001	104,99	170,304	97,982	26,734	295,020	143,13	161,186	94,217	28,176	283,579	134,04	38,14	136,086	83,852	32,146	252,084
9	2001	99,15	174,144	102,044	32,122	308,310	127,76	167,945	99,391	32,928	300,265	138,75	28,61	146,459	90,197	35,722	272,378
10	2001	96,03	176,388	119,218	32,000	327,606	120,03	171,671	117,627	31,605	320,903	140,92	24,00	152,799	111,258	30,026	294,083
11	2001	96,11	176,274	117,833	32,671	326,779	120,11	171,583	116,150	33,581	321,314	140,36	24,00	152,799	109,408	37,223	299,430
12	2001	96,12	176,219	97,387	70,266	343,873	120,12	171,539	94,200	71,323	337,063	139,68	24,00	152,799	81,435	75,556	309,790

BSRB félögin hjá ríkinu, alls

		Karlar				Allir				Konur							
MA	AR	STG	DL	YL	ÖL	HL	STG	DL	YL	ÖL	HL	STG	DL	YL	ÖL	HL	
1	2001	2,183,15	135,959	73,323	24,921	234,203	5,705,45	126,308	47,981	15,081	189,371	127,37	3,522,31	120,326	32,274	8,983	161,583
2	2001	2,163,55	136,164	71,896	23,002	231,061	5,678,69	126,556	44,802	14,277	185,636	127,39	3,515,12	120,643	28,127	8,907	157,676
3	2001	2,151,87	142,982	71,071	23,596	237,649	5,615,69	133,916	45,910	15,043	194,869	134,00	3,463,82	128,284	30,279	9,729	168,293
4	2001	2,132,52	143,427	77,449	40,849	261,725	5,594,22	134,274	52,637	32,385	219,297	132,74	3,461,70	128,636	37,352	27,171	193,159
5	2001	2,294,77	145,471	75,908	30,397	251,776	5,950,58	135,713	51,278	22,140	209,130	132,30	3,655,82	129,587	35,817	16,957	182,361
6	2001	2,539,17	142,193	69,368	24,927	236,488	6,654,63	133,074	45,902	15,312	194,289	127,77	4,115,48	127,448	31,425	9,381	168,253
7	2001	2,467,00	145,686	64,852	23,481	234,019	6,714,04	134,285	40,638	14,453	189,375	127,95	4,167,05	127,316	25,838	8,935	162,088
8	2001	2,467,51	147,064	65,874	24,769	237,706	6,518,79	135,284	41,502	14,857	191,643	128,49	4,051,28	128,108	26,659	8,821	163,587
9	2001	2,214,57	159,487	77,141	28,581	265,208	5,732,46	142,556	49,027	17,627	209,210	134,51	3,517,90	131,898	31,330	10,731	173,958
10	2001	2,191,64	161,242	81,761	27,661	270,665	5,543,50	145,397	51,204	17,418	214,020	136,31	3,351,87	135,037	31,225	10,721	176,982
11	2001	2,201,59	161,880	80,266	29,254	271,400	5,558,21	146,984	50,968	18,755	216,708	137,33	3,356,62	137,215	31,753	11,868	180,836
12	2001	2,197,87	161,482	73,040	67,575	302,097	5,632,56	146,562	48,197	59,908	254,668	136,30	3,434,70	137,016	32,300	55,002	224,318

Félag tækniskólakennara og Kennarafélag KHÍ

		<i>Karlar</i>						<i>Allir</i>						<i>Konur</i>				
MA	AR	STG	DL	YL	ÖL	HL	STG	DL	YL	ÖL	HL	Km.dl	STG	DL	YL	ÖL	HL	
1	2001	70,70	183.187	94.712	195	278.095	146,12	176.067	78.686	95	254.848	122,57	75,42	169.392	63.663	0	233.055	
2	2001	69,37	183.614	84.143	0	267.757	142,27	176.332	72.117	0	248.449	122,53	72,90	169.403	60.674	0	230.077	
3	2001	69,44	184.219	82.362	0	266.581	143,05	177.110	68.095	0	245.205	122,35	73,61	170.404	54.636	0	225.040	
4	2001	69,43	230.210	98.117	9.441	337.768	140,89	219.103	81.944	9.496	310.543	149,53	71,46	208.311	66.230	9.548	284.090	
5	2001	69,69	229.889	125.348	72	355.310	142,48	218.812	101.639	211	320.663	147,26	72,79	208.206	78.939	344	287.490	
6	2001	69,65	230.239	81.869	0	312.108	143,96	218.948	74.120	0	293.068	145,13	74,31	208.365	66.856	0	275.221	
7	2001	69,08	229.740	81.711	0	311.451	140,34	218.841	82.940	442	302.223	143,95	71,26	208.275	84.131	870	293.276	
8	2001	77,38	223.466	61.041	0	284.506	173,24	212.700	54.508	0	267.208	139,46	95,86	204.010	49.234	0	253.244	
9	2001	72,48	225.394	76.626	0	302.020	161,13	215.392	62.712	0	278.104	140,30	88,65	207.213	51.335	0	258.548	
10	2001	67,29	229.580	82.854	0	312.434	150,61	217.951	70.663	0	288.614	141,06	83,33	208.561	60.819	0	269.380	
11	2001	66,86	228.640	85.293	142	314.075	151,22	217.356	73.983	107	291.446	140,19	84,36	208.413	65.018	79	273.510	
12	2001	67,54	229.553	109.939	34.677	374.169	152,65	218.142	92.961	33.398	344.501	140,05	85,12	209.087	79.490	32.382	320.960	

Dýralæknafélag Íslands og Stéttarfélag sálfræðinga á Íslandi

		<i>Karlar</i>						<i>Allir</i>						<i>Konur</i>				
MA	AR	STG	DL	YL	ÖL	HL	STG	DL	YL	ÖL	HL	Km.dl	STG	DL	YL	ÖL	HL	
1	2001	30,77	225.625	38.173	36.157	299.955	68,87	208.765	39.945	25.347	274.057	146,61	38,10	195.147	41.376	16.616	253.139	
2	2001	32,89	224.737	39.301	20.488	284.526	70,11	208.004	39.153	15.757	262.914	145,81	37,22	193.221	39.021	11.577	243.819	
3	2001	31,69	226.130	43.696	23.692	293.518	69,76	208.741	43.174	18.318	270.234	145,47	38,08	194.272	42.740	13.847	250.860	
4	2001	30,77	233.468	34.303	33.991	301.762	68,15	213.184	35.893	26.561	275.638	146,77	37,38	196.487	37.202	20.445	254.133	
5	2001	31,41	233.094	46.344	33.275	312.714	68,80	213.102	45.398	21.191	279.691	144,68	37,40	196.312	44.604	11.041	251.957	
6	2001	31,83	233.081	42.479	28.755	304.314	71,41	213.173	40.986	20.983	275.141	142,55	39,58	197.162	39.785	14.733	251.680	
7	2001	31,33	260.249	43.166	28.009	331.423	67,01	253.125	42.457	27.548	323.130	167,96	35,68	246.869	41.834	27.144	315.847	
8	2001	32,72	259.781	49.725	5.321	314.826	70,12	251.590	47.234	6.406	305.230	166,41	37,40	244.427	45.055	7.355	296.837	
9	2001	35,03	255.298	41.230	19.134	315.662	73,54	250.038	37.645	14.827	302.511	164,30	38,51	245.253	34.384	10.909	290.546	
10	2001	35,66	252.032	49.119	19.582	320.732	75,50	247.972	42.430	13.724	304.126	161,90	39,84	244.339	36.444	8.482	289.265	
11	2001	33,70	253.688	45.610	19.643	318.941	72,24	249.250	43.105	13.989	306.343	162,18	38,54	245.369	40.914	9.044	295.326	
12	2001	33,82	253.498	36.875	33.339	323.713	74,23	248.478	31.098	33.725	313.300	160,93	40,42	244.277	26.264	34.047	304.588	

Stéttarfélög sjúkraþjálfna, iðjuþjálfna og félagsráðgjafa

MA	AR	<i>Karlar</i>				
		STG	DL	YL	ÖL	HL
1	2001					
2	2001					
3	2001					
4	2001					
5	2001					
6	2001					
7	2001					
8	2001					
9	2001					
10	2001					
11	2001					
12	2001					

<i>Allir</i>						
STG	DL	YL	ÖL	HL	Km.dl	
146,69	187.031	34.976	3.417	225.424	135,27	
145,30	187.731	35.403	3.121	226.256	135,53	
143,62	188.568	36.432	3.641	228.641	135,33	
141,98	190.292	37.013	12.939	240.244	134,91	
144,93	199.759	35.809	3.226	238.794	139,66	
144,84	208.454	38.621	3.297	250.372	143,55	
145,13	208.836	32.981	3.479	245.297	142,71	
140,54	209.340	36.964	10.734	257.038	142,59	
142,94	209.049	37.201	4.016	250.267	141,46	
144,33	208.225	41.853	4.222	254.300	140,01	
144,77	208.880	40.951	3.311	253.141	139,96	
140,72	208.787	38.158	40.321	287.266	139,25	

<i>Konur</i>					
STG	DL	YL	ÖL	HL	

Meinataeknaf. Ísl og Röntgenteknaf. Ísl

MA	AR	<i>Karlar</i>				
		STG	DL	YL	ÖL	HL
1	2001					
2	2001					
3	2001					
4	2001					
5	2001					
6	2001					
7	2001					
8	2001					
9	2001					
10	2001					
11	2001					
12	2001					

<i>Allir</i>						
STG	DL	YL	ÖL	HL	Km.dl	
217,14	164.265	67.798	18.609	250.672	143,22	
208,25	164.072	66.892	17.270	248.234	142,79	
211,11	164.385	71.205	19.279	254.869	142,22	
210,25	165.245	77.240	30.179	272.663	141,24	
210,03	174.032	76.150	19.844	270.027	146,69	
208,72	183.671	80.640	28.440	292.752	152,48	
210,64	184.394	72.842	19.133	276.368	151,90	
209,36	183.998	72.724	22.106	278.827	151,09	
203,89	184.455	77.196	20.099	281.750	150,48	
206,70	184.609	76.034	21.008	281.651	149,64	
203,47	184.270	74.714	19.781	278.765	148,85	
198,30	184.963	83.041	61.515	329.519	148,72	

<i>Konur</i>					
STG	DL	YL	ÖL	HL	

Félag íslenskra náttúrufræðinga

		<i>Karlar</i>						<i>Allir</i>						<i>Konur</i>				
MA	AR	STG	DL	YL	ÖL	HL	STG	DL	YL	ÖL	HL	Km.dl	STG	DL	YL	ÖL	HL	
1	2001	331,86	212.566	37.745	3.473	253.785	533,62	205.723	34.112	3.557	243.391	146,86	201,76	194.468	28.135	3.693	226.296	
2	2001	330,67	212.729	47.716	5.004	265.449	540,30	205.212	40.175	4.821	250.209	146,23	209,63	193.356	28.280	4.532	226.169	
3	2001	335,39	213.716	59.767	5.834	279.317	542,85	206.097	50.070	5.448	261.615	145,99	207,46	193.780	34.393	4.822	232.996	
4	2001	336,76	214.983	56.537	16.134	287.654	550,46	207.664	48.819	15.428	271.910	145,32	213,71	196.131	36.656	14.315	247.102	
5	2001	345,98	213.261	55.384	5.394	274.039	559,65	205.900	47.826	4.447	258.174	142,10	213,67	193.982	35.587	2.915	232.485	
6	2001	358,13	212.103	49.950	9.244	271.298	585,97	204.659	42.255	7.982	254.895	139,11	227,84	192.957	30.159	5.997	229.113	
7	2001	359,65	226.267	58.502	5.334	290.103	590,38	217.924	51.829	5.032	274.784	146,99	230,74	204.918	41.428	4.561	250.907	
8	2001	363,08	226.730	47.629	36.612	310.971	593,93	218.815	43.559	36.195	298.569	147,12	230,85	206.366	37.159	35.538	279.063	
9	2001	345,02	230.112	59.993	5.770	295.875	566,98	221.930	50.420	5.109	277.459	148,23	221,95	209.211	35.538	4.082	248.832	
10	2001	349,44	231.173	58.896	5.595	295.664	569,75	222.780	49.349	5.032	277.162	147,85	220,31	209.468	34.205	4.140	247.813	
11	2001	343,95	231.853	53.449	5.574	290.876	561,53	223.003	44.665	5.313	272.981	147,49	217,58	209.013	30.779	4.901	244.693	
12	2001	349,41	231.688	43.682	39.638	315.008	567,51	223.265	37.468	39.902	300.635	146,98	218,09	209.770	27.513	40.323	277.606	

Fél. ísl. félagsvís. og Fél. ísl. fræða

		<i>Karlar</i>						<i>Allir</i>						<i>Konur</i>				
MA	AR	STG	DL	YL	ÖL	HL	STG	DL	YL	ÖL	HL	Km.dl	STG	DL	YL	ÖL	HL	
1	2001	32,20	196.907	23.112	1.137	221.156	72,48	195.236	27.531	5.247	228.014	134,10	40,28	193.900	31.064	8.532	233.496	
2	2001	32,56	196.429	33.074	1.665	231.168	72,89	195.405	30.056	2.514	227.975	133,97	40,33	194.578	27.621	3.199	225.398	
3	2001	34,57	201.370	27.637	1.132	230.140	74,58	197.686	28.709	3.622	230.016	134,74	40,01	194.502	29.636	5.772	229.910	
4	2001	33,82	197.944	25.138	10.352	233.434	74,54	195.326	31.513	12.463	239.302	131,52	40,72	193.152	36.808	14.216	244.176	
5	2001	32,66	214.045	25.791	2.237	242.073	74,02	210.948	33.598	3.650	248.195	140,07	41,37	208.503	39.761	4.765	253.029	
6	2001	35,05	209.587	30.453	1.117	241.157	77,79	207.878	31.735	1.380	240.993	135,95	42,73	206.476	32.787	1.596	240.858	
7	2001	36,34	211.385	28.687	1.077	241.150	78,83	209.126	32.684	2.905	244.715	135,72	42,50	207.195	36.103	4.467	247.765	
8	2001	35,36	214.044	26.106	1.107	241.258	77,92	211.783	26.478	1.673	239.935	137,00	42,56	209.904	26.787	2.144	238.836	
9	2001	35,64	212.166	33.185	1.098	246.449	78,50	211.542	34.072	2.774	248.389	135,95	42,86	211.024	34.810	4.168	250.002	
10	2001	35,67	217.978	34.577	3.093	255.647	79,47	215.115	31.409	3.170	249.694	137,37	43,80	212.784	28.828	3.234	244.846	
11	2001	36,34	218.571	32.179	3.036	253.786	76,48	216.759	33.075	2.749	252.583	137,94	40,14	215.118	33.886	2.489	251.493	
12	2001	35,38	217.180	35.374	37.199	289.752	76,38	216.280	32.703	38.648	287.632	137,00	41,00	215.504	30.399	39.899	285.802	

BHM, ríkisstarfsmenn

Apríl 2002

Félag háskólakennara

		Kartar						Allir						Konur					
MA	AR	STG	DL	YL	ÖL	HL	STG	DL	YL	ÖL	HL	Km.dl	STG	DL	YL	ÖL	HL		
1	2001	229,30	183,524	54,100	2,832	240,456	445,04	178,621	47,285	2,447	228,352	108,93	215,75	173,410	40,042	2,037	215,489		
2	2001	226,77	182,463	64,412	3,039	249,915	441,16	178,327	51,997	2,447	232,771	108,55	214,38	173,952	38,865	1,820	214,636		
3	2001	227,61	182,666	64,645	34,235	281,546	441,26	178,265	53,467	26,989	258,721	107,88	213,65	173,577	41,560	19,268	234,405		
4	2001	230,97	223,442	65,017	88,079	376,538	442,53	215,282	53,166	73,843	342,292	128,70	211,56	206,374	40,227	58,302	304,903		
5	2001	230,60	223,519	66,307	6,008	295,834	441,71	214,798	53,411	5,648	273,858	126,64	211,10	205,272	39,324	5,256	249,851		
6	2001	239,54	220,618	50,402	77,100	348,120	456,39	212,488	44,131	59,795	316,413	123,39	216,84	203,506	37,202	40,679	281,387		
7	2001	235,41	221,986	49,365	18,467	289,819	452,67	213,189	40,397	16,325	269,911	122,84	217,26	203,656	30,680	14,004	248,340		
8	2001	238,33	221,947	47,721	4,477	274,146	462,25	213,037	39,689	3,027	255,753	122,36	223,92	203,554	31,141	1,483	236,177		
9	2001	237,53	225,906	64,240	2,899	293,045	461,70	216,776	53,713	2,103	272,592	123,69	224,17	207,102	42,558	1,260	250,920		
10	2001	238,87	226,064	61,207	3,513	290,784	463,50	217,298	52,066	2,642	272,006	123,20	224,63	207,977	42,346	1,715	252,037		
11	2001	239,12	227,482	60,237	3,497	291,217	464,74	217,744	54,246	2,383	274,374	123,03	225,61	207,423	47,897	1,203	256,523		
12	2001	236,81	226,805	66,301	36,340	329,445	462,65	217,423	64,521	35,920	317,864	122,28	225,85	207,586	62,655	35,480	305,721		

Félag háskólakennara á Akureyri

		Kartar						Allir						Konur					
MA	AR	STG	DL	YL	ÖL	HL	STG	DL	YL	ÖL	HL	Km.dl	STG	DL	YL	ÖL	HL		
1	2001	37,03	180,841	86,197	0	267,038	69,51	171,063	66,220	848	238,131	140,54	32,47	159,912	43,436	1,816	205,164		
2	2001	37,03	180,841	97,615	0	278,456	69,66	171,156	71,306	0	242,461	140,36	32,62	160,160	41,438	0	201,599		
3	2001	37,03	180,841	128,789	0	309,630	70,47	171,104	97,561	0	268,665	139,49	33,43	160,318	62,969	0	223,287		
4	2001	36,98	231,880	94,921	8,172	334,973	70,21	218,770	61,951	8,365	289,086	176,19	33,23	204,178	25,254	8,580	238,012		
5	2001	36,98	235,778	111,984	0	347,762	69,71	221,038	74,645	0	295,682	175,56	32,73	204,381	32,451	0	236,932		
6	2001	36,87	236,054	34,162	1,009	271,225	67,79	222,894	23,692	2,077	248,663	174,36	30,92	207,200	11,205	3,350	221,755		
7	2001	37,98	234,263	42,632	0	276,895	72,01	220,613	26,478	417	247,508	171,25	34,03	205,377	8,447	882	214,706		
8	2001	35,27	232,190	84,537	0	316,727	68,65	220,318	57,985	1,342	279,644	170,48	33,38	207,774	29,932	2,760	240,466		
9	2001	36,49	234,500	73,349	0	307,849	70,95	221,197	52,785	1,298	275,280	170,03	34,46	207,106	31,005	2,674	240,785		
10	2001	36,79	235,360	81,572	0	316,932	71,98	221,455	64,325	1,280	287,060	169,15	35,18	206,915	46,290	2,618	255,823		
11	2001	36,69	234,621	87,694	0	322,315	72,77	221,096	60,772	1,266	283,134	168,29	36,08	207,340	33,388	2,554	243,281		
12	2001	36,69	234,956	81,498	32,316	348,771	72,77	221,352	57,418	33,226	311,997	167,71	36,08	207,515	32,925	34,152	274,592		

Fél. háskólamentaðra starfsmanna stjórnarráðs

MA	AR	<i>Karlar</i>					<i>Allir</i>						<i>Konur</i>				
		STG	DL	YL	ÖL	HL	STG	DL	YL	ÖL	HL	Km.dl	STG	DL	YL	ÖL	HL
1	2001	138,68	214.273	50.062	4.752	269.088	276,42	210.135	48.040	3.488	261.664	143,94	137,74	205.968	46.005	2.216	254.189
2	2001	135,13	230.412	58.790	5.043	294.245	269,01	224.959	52.742	3.536	281.237	153,81	133,88	219.455	46.637	2.015	268.107
3	2001	134,05	231.457	62.887	5.084	299.428	268,32	225.936	57.185	3.545	286.667	153,57	134,27	220.425	51.493	2.009	273.927
4	2001	138,20	232.712	61.492	15.597	309.801	272,94	226.198	55.231	14.012	295.441	151,89	134,74	219.516	48.809	12.386	280.712
5	2001	138,19	232.484	60.432	5.071	297.987	279,22	226.566	54.782	3.632	284.980	150,03	141,04	220.768	49.246	2.223	272.236
6	2001	138,31	232.638	57.866	4.768	295.273	284,52	226.047	52.461	4.240	282.748	147,43	146,21	219.813	47.347	3.740	270.900
7	2001	138,86	233.077	61.071	6.994	301.143	283,28	226.419	56.563	4.568	287.550	146,54	144,41	220.017	52.228	2.235	274.480
8	2001	139,27	233.406	60.599	4.847	298.851	288,91	226.534	51.631	3.544	281.709	146,14	149,65	220.139	43.284	2.332	265.756
9	2001	138,60	234.077	57.955	5.886	297.918	291,48	227.876	55.182	4.487	287.545	146,05	152,89	222.254	52.669	3.219	278.142
10	2001	138,25	233.864	54.597	5.463	293.923	294,86	227.748	53.230	4.558	285.535	145,03	156,61	222.348	52.023	3.760	278.131
11	2001	137,04	233.997	65.405	5.474	304.876	296,06	227.813	60.734	4.384	292.930	144,58	159,01	222.482	56.708	3.444	282.635
12	2001	141,35	232.641	63.236	39.081	334.958	301,60	227.750	56.126	37.029	320.905	143,87	160,25	223.435	49.855	35.220	308.511

Félag íslenskra hjúkrunarfræðinga

MA	AR	<i>Karlar</i>					<i>Allir</i>						<i>Konur</i>				
		STG	DL	YL	ÖL	HL	STG	DL	YL	ÖL	HL	Km.dl	STG	DL	YL	ÖL	HL
1	2001	18,16	180.984	111.943	26.377	319.304	1.096,78	172.221	60.237	26.428	258.886	135,97	1.078,62	172.073	59.367	26.429	257.869
2	2001	20,10	181.517	97.310	17.517	296.344	1.091,22	173.025	54.437	22.776	250.237	136,35	1.071,12	172.865	53.632	22.874	249.372
3	2001	18,16	181.203	90.200	20.114	291.517	1.069,98	173.369	61.568	25.498	260.435	135,82	1.051,82	173.234	61.074	25.591	259.898
4	2001	19,03	180.225	105.148	41.992	327.366	1.079,07	174.014	82.332	33.508	289.854	134,68	1.060,04	173.902	81.922	33.356	289.180
5	2001	18,62	181.249	103.075	27.489	311.812	1.040,42	174.348	71.525	25.000	270.873	133,07	1.021,80	174.222	70.950	24.954	270.127
6	2001	21,25	200.009	101.384	34.177	335.570	1.078,14	194.253	74.201	27.549	296.003	146,02	1.056,90	194.137	73.655	27.416	295.208
7	2001	19,31	203.810	113.507	33.446	350.763	1.063,10	195.181	67.520	25.075	287.776	145,60	1.043,80	195.021	66.669	24.921	286.611
8	2001	18,06	204.479	120.216	39.789	364.484	1.029,06	195.679	73.695	36.651	306.024	145,50	1.011,00	195.521	72.864	36.594	304.980
9	2001	19,48	201.447	81.726	24.681	307.854	1.037,95	195.155	67.204	31.081	293.440	144,16	1.018,47	195.035	66.926	31.204	293.165
10	2001	20,51	199.944	94.817	32.788	327.549	1.042,55	195.353	69.248	31.639	296.240	143,39	1.022,04	195.261	68.735	31.616	295.611
11	2001	21,13	199.571	93.383	30.607	323.561	1.040,99	195.314	71.810	31.245	298.369	142,87	1.019,86	195.226	71.363	31.258	297.847
12	2001	22,32	202.779	89.941	70.229	362.949	1.046,07	195.655	77.032	70.163	342.849	142,45	1.023,75	195.500	76.750	70.161	342.411

Kjarafélag viðskipta- og hagfræðinga

		<i>Karlar</i>					<i>Allir</i>						<i>Konur</i>				
MA	AR	STG	DL	YL	ÖL	HL	STG	DL	YL	ÖL	HL	Km.dl	STG	DL	YL	ÖL	HL
1	2001	130,03	219.414	81.945	1.961	303.320	194,15	218.618	83.672	1.313	303.604	143,66	64,12	217.003	87.175	0	304.178
2	2001	129,64	220.314	89.446	993	310.753	196,76	219.193	89.096	686	308.975	143,78	67,12	217.029	88.421	92	305.541
3	2001	129,71	219.293	84.799	992	305.085	199,23	218.867	84.943	684	304.494	142,72	69,53	218.071	85.212	108	303.391
4	2001	131,19	220.696	78.043	10.366	309.106	197,07	220.030	81.275	10.052	311.357	141,74	65,88	218.703	87.711	9.425	315.839
5	2001	133,04	236.379	89.508	1.917	327.803	204,28	235.194	91.130	1.248	327.572	149,41	71,24	232.981	94.158	0	327.140
6	2001	133,22	236.396	85.228	15.412	337.036	206,98	233.939	84.515	14.664	333.117	146,37	73,77	229.501	83.226	13.313	326.041
7	2001	136,13	236.543	79.346	3.840	319.728	210,94	233.677	80.084	2.958	316.719	145,09	74,82	228.464	81.427	1.354	311.245
8	2001	139,13	236.836	67.358	755	304.949	212,60	234.578	71.149	494	306.221	145,18	73,47	230.301	78.329	0	308.630
9	2001	137,25	238.083	76.063	219	314.364	213,45	235.719	79.154	141	315.015	144,93	76,20	231.462	84.724	0	316.185
10	2001	139,48	238.295	95.276	396	333.966	222,67	235.328	94.275	248	329.851	143,77	83,20	230.355	92.597	0	322.951
11	2001	141,79	238.272	90.984	1.269	330.525	224,90	234.920	86.467	845	322.231	143,03	83,12	229.202	78.761	120	308.084
12	2001	138,50	239.051	86.927	34.224	360.202	222,62	235.283	83.709	32.590	351.581	142,59	84,11	229.078	78.409	29.899	337.386

Ljósmeðrafélag Íslands*Ljósmeðrafélag Íslands gengur í BHM um áramótin 1998/1999*

		<i>Karlar</i>					<i>Allir</i>						<i>Konur</i>				
MA	AR	STG	DL	YL	ÖL	HL	STG	DL	YL	ÖL	HL	Km.dl.	STG	DL	YL	ÖL	HL
1	2001						89,24	170.140	35.196	34.636	239.972	151,98	89,24	170.140	35.196	34.636	239.972
2	2001						86,93	171.368	30.950	34.850	237.168	152,80	86,93	171.368	30.950	34.850	237.168
3	2001						87,38	171.245	33.425	37.728	242.397	151,79	87,38	171.245	33.425	37.728	242.397
4	2001						94,19	171.069	73.732	39.085	283.887	149,80	94,19	171.069	73.732	39.085	283.887
5	2001						90,59	171.305	48.957	33.034	253.295	147,93	90,59	171.305	48.957	33.034	253.295
6	2001						96,32	192.030	48.550	34.653	275.233	163,33	96,32	192.030	48.550	34.653	275.233
7	2001						93,24	192.739	38.268	37.821	268.827	162,67	93,24	192.739	38.268	37.821	268.827
8	2001						93,76	193.427	41.775	36.928	272.130	162,73	93,76	193.427	41.775	36.928	272.130
9	2001						91,81	193.592	37.518	57.673	288.783	161,80	91,81	193.592	37.518	57.673	288.783
10	2001						91,00	193.461	33.872	42.138	269.471	160,66	91,00	193.461	33.872	42.138	269.471
11	2001						90,40	193.971	39.279	42.538	275.788	160,53	90,40	193.971	39.279	42.538	275.788
12	2001						88,06	194.446	60.899	80.695	336.040	160,18	88,06	194.446	60.899	80.695	336.040

Stéttarfélag háskólam. á matvæla- og næringasviði

		<i>Karlar</i>					
MA	AR	STG	DL	YL	ÖL	HL	
1	2001	22,62	202.905	40.384	2.601	245.890	
2	2001	22,95	201.852	51.176	1.809	254.837	
3	2001	22,62	201.819	43.752	1.836	247.407	
4	2001	22,81	204.311	45.572	13.389	263.272	
5	2001	22,73	218.940	50.249	3.047	272.236	
6	2001	23,69	217.941	56.534	21.941	296.416	
7	2001	21,67	223.550	48.196	2.210	273.956	
8	2001	23,49	224.678	38.142	3.049	265.869	
9	2001	24,76	222.201	34.611	2.893	259.705	
10	2001	23,12	224.230	45.760	3.688	273.677	
11	2001	22,96	224.470	55.268	4.390	284.128	
12	2001	23,12	224.643	30.392	43.472	298.506	

Stéttarfélag lögfræðinga

		<i>Karlar</i>					
MA	AR	STG	DL	YL	ÖL	HL	
1	2001	102,71	204.171	79.485	19.559	303.214	
2	2001	109,93	202.798	87.696	12.976	303.470	
3	2001	104,13	203.660	75.739	13.464	292.863	
4	2001	103,04	219.524	88.287	28.662	336.474	
5	2001	107,55	219.255	83.992	19.632	322.879	
6	2001	107,15	220.861	89.499	19.947	330.307	
7	2001	106,67	222.148	88.433	18.939	329.521	
8	2001	108,39	222.447	80.850	15.019	318.316	
9	2001	105,72	222.353	88.591	17.117	328.061	
10	2001	108,20	223.154	89.780	12.906	325.840	
11	2001	111,01	223.524	89.901	13.511	326.936	
12	2001	112,46	223.769	84.758	47.059	355.586	

<i>Allir</i>						
STG	DL	YL	ÖL	HL	Km.dl	
59,92	199.527	30.794	1.315	231.636	163,81	
60,39	200.210	35.671	688	236.569	164,07	
61,53	197.563	33.034	675	231.272	160,95	
61,87	198.386	31.354	11.645	241.386	159,67	
60,15	211.936	37.285	1.948	251.169	168,21	
62,17	211.053	41.317	22.743	275.113	164,99	
59,35	215.582	34.119	2.751	252.452	167,23	
59,29	216.079	29.658	3.154	248.891	167,08	
60,32	215.139	30.233	2.306	247.678	165,27	
57,58	216.987	34.719	3.406	255.112	165,62	
57,80	218.033	37.736	2.958	258.727	165,85	
58,07	217.892	27.764	43.779	289.435	164,97	

<i>Konur</i>					
STG	DL	YL	ÖL	HL	
37,31	197.478	24.981	535	222.995	
37,44	199.204	26.169	0	225.373	
38,92	195.090	26.805	0	221.895	
39,06	194.925	23.050	10.627	228.602	
37,42	207.681	29.409	1.280	238.370	
38,48	206.812	31.947	23.236	261.995	
37,68	210.998	26.022	3.062	240.082	
35,80	210.435	24.091	3.223	237.749	
35,56	210.221	27.185	1.898	239.303	
34,47	212.129	27.315	3.217	242.661	
34,85	213.792	26.186	2.015	241.994	
34,96	213.427	26.026	43.983	283.436	

<i>Allir</i>						
STG	DL	YL	ÖL	HL	Km.dl	
213,77	201.751	66.057	16.239	284.047	137,75	
217,52	200.851	73.723	10.982	285.557	136,89	
213,42	201.900	67.009	11.288	280.196	136,79	
212,49	216.073	76.369	25.275	317.718	144,62	
211,67	216.501	77.810	15.637	309.948	142,90	
211,19	217.098	79.151	15.923	312.172	141,14	
210,19	217.757	79.830	13.999	311.586	140,48	
215,76	217.779	72.597	12.158	302.534	140,04	
212,65	219.230	80.930	13.087	313.246	140,05	
209,49	220.799	81.812	11.026	313.637	140,16	
215,52	221.159	83.172	10.762	315.092	139,90	
221,27	220.928	73.115	45.174	339.218	139,11	

<i>Konur</i>					
STG	DL	YL	ÖL	HL	
111,05	199.513	53.637	13.168	266.319	
107,58	198.861	59.446	8.945	267.252	
109,29	200.223	58.691	9.215	268.128	
109,46	212.824	65.150	22.087	300.062	
104,13	213.657	71.425	11.511	296.592	
104,05	213.222	68.495	11.779	293.496	
103,52	213.232	70.964	8.908	293.105	
107,37	213.067	64.265	9.271	286.603	
106,93	216.141	73.355	9.102	298.598	
101,29	218.284	73.300	9.017	300.601	
104,51	218.646	76.024	7.842	302.511	
108,81	217.992	61.080	43.227	322.299	

Útgarður, félag háskólamanna

MA	AR	Karlur					Allir						Konur				
		STG	DL	YL	ÖL	HL	STG	DL	YL	ÖL	HL	Km.dl	STG	DL	YL	ÖL	HL
1	2001	136,15	186.590	60.863	9.280	256.733	297,98	179.686	46.856	5.677	232.220	134,81	161,83	173.878	35.073	2.647	211.597
2	2001	140,35	187.084	62.027	8.809	257.920	300,31	180.996	47.895	5.544	234.435	135,55	159,96	175.654	35.497	2.679	213.830
3	2001	137,50	187.768	63.200	7.701	258.670	294,28	181.297	48.682	5.125	235.104	134,98	156,78	175.622	35.949	2.865	214.436
4	2001	139,57	200.509	74.998	19.233	294.739	299,38	194.309	57.669	16.327	268.305	142,91	159,81	188.895	42.535	13.789	245.219
5	2001	135,32	200.647	71.921	11.875	284.443	300,40	193.593	56.232	7.922	257.747	140,42	165,07	187.810	43.370	4.681	235.861
6	2001	143,63	199.314	68.396	9.947	277.657	316,94	193.369	51.795	6.906	252.069	138,14	173,31	188.441	38.037	4.386	230.864
7	2001	140,96	201.573	62.217	10.606	274.396	304,38	195.537	48.250	6.732	250.519	138,62	163,42	190.330	36.204	3.390	229.923
8	2001	135,97	201.457	57.843	9.414	268.713	295,89	195.697	47.202	5.939	248.838	138,29	159,93	190.800	38.156	2.985	231.941
9	2001	134,33	203.105	64.812	10.469	278.387	296,56	195.826	50.374	6.781	252.982	137,47	162,24	189.799	38.420	3.728	231.948
10	2001	137,58	204.367	68.235	10.102	282.703	300,15	196.542	53.860	5.841	256.244	137,09	162,57	189.921	41.695	2.236	233.852
11	2001	136,26	203.852	72.767	10.195	286.814	297,68	196.306	58.203	6.096	260.604	136,46	161,42	189.935	45.908	2.635	238.479
12	2001	137,82	206.644	64.421	44.202	315.266	299,67	198.971	51.335	40.834	291.139	137,67	161,85	192.437	40.191	37.965	270.594

Proskapjálfafélag Íslands

Proskapjálfafélag Íslands gengur í BHM þ. 1. maí 1999, Kaupmáttur miðast við 07-12/1997 = 100,00

MA	AR	Karlur					Allir						Konur				
		STG	DL	YL	ÖL	HL	STG	DL	YL	ÖL	HL	Km.dl	STG	DL	YL	ÖL	HL
1	2001						159,45	121.928	59.360	9.963	191.250	91,48					
2	2001						160,45	121.634	48.837	9.988	180.459	91,09					
3	2001						131,46	123.041	50.319	10.820	184.179	91,60					
4	2001						121,32	122.779	82.519	22.924	228.222	90,30					
5	2001						123,57	123.042	67.470	11.722	202.233	89,24					
6	2001						111,97	123.691	72.867	11.153	207.712	88,36					
7	2001						110,38	176.483	62.083	15.424	253.991	125,11					
8	2001						129,91	174.256	41.002	29.025	244.283	123,14					
9	2001						124,30	176.921	49.772	18.547	245.239	124,20					
10	2001						124,38	177.217	53.008	19.191	249.416	123,61					
11	2001						124,44	177.342	50.512	19.642	247.497	123,28					
12	2001						121,19	177.573	53.726	58.392	289.692	122,87					

BHM, ríkisstarfsmenn

BHM félögin hjá ríkinu, alls *HÍK framhaldsskólakemmarar fara úr BHM samtölum frá og með janúar 2000*

MA	AR	Kortar				Allir				Konur							
		STG	DL	YL	ÖL	HL	STG	DL	YL	ÖL	HL	STG	DL	YL	ÖL	HL	
1	2001	1.350,04	199.657	59.537	6.438	265.633	4.222,94	183.317	53.644	12.070	249.031	133,79	2.872,01	175.650	50.883	14.721	241.254
2	2001	1.357,53	201.127	65.209	5.782	272.119	4.204,50	184.631	53.378	10.641	248.651	134,51	2.846,94	176.765	47.737	12.958	237.460
3	2001	1.346,68	202.060	67.550	11.185	280.795	4.151,74	185.636	57.109	14.223	256.988	134,46	2.805,08	177.751	52.096	15.682	245.529
4	2001	1.359,26	215.912	69.261	29.339	314.511	4.170,16	194.204	65.527	27.734	287.464	138,97	2.810,92	183.707	63.721	26.957	274.385
5	2001	1.371,56	217.862	71.332	7.642	296.837	4.159,25	196.549	62.942	11.995	271.486	138,68	2.787,70	186.064	58.813	14.136	259.013
6	2001	1.411,30	218.027	62.951	22.347	303.325	4.266,85	202.783	59.692	20.572	283.047	140,88	2.854,55	195.261	58.094	19.702	273.058
7	2001	1.410,09	222.980	62.824	10.028	295.833	4.239,14	207.345	57.327	13.562	278.234	142,94	2.828,07	199.566	54.599	15.329	269.494
8	2001	1.422,58	223.026	57.508	14.168	294.702	4.269,07	207.547	55.461	19.130	282.137	142,63	2.846,51	199.811	54.438	21.609	275.858
9	2001	1.396,21	224.977	65.289	6.710	296.977	4.229,41	208.784	58.456	13.659	280.899	142,54	2.833,21	200.803	55.088	17.084	272.976
10	2001	1.402,63	225.913	67.588	6.628	300.129	4.243,51	209.408	60.210	13.418	283.035	142,06	2.840,89	201.259	56.567	16.770	274.595
11	2001	1.396,62	226.234	67.629	6.791	300.654	4.231,34	209.621	61.115	13.277	284.013	141,72	2.834,71	201.436	57.906	16.473	275.814
12	2001	1.403,71	226.397	64.762	40.174	331.333	4.239,10	210.160	62.148	48.875	321.183	141,42	2.835,40	202.122	60.853	53.183	316.158

3.3 Kennarasamband Íslands, ríkisstarfsmenn

Apríl 2002

* Kennarasamband Íslands, ríkisstarfsmenn

		Kerlar					Allir					Konur					
MA	AR	STG	DL	YL	ÖL	HL	STG	DL	YL	ÖL	HL	Km.dl	STG	DL	YL	ÖL	HL
1	2001	543.93	203.652	154.091	110	357.852	1.029,03	200.601	120.968	144	321.714	159,06	485,09	197.180	83.828	182	281.191
2	2001	653.68	203.743	138.099	321	342.163	1.229,28	201.273	109.636	263	311.172	159,30	575,60	198.468	77.312	197	275.977
3	2001	650.37	204.410	118.753	514	323.677	1.222,00	201.852	92.240	479	294.571	158,81	571,63	198.942	62.075	439	261.456
4	2001	651.63	204.523	172.183	9.798	386.504	1.222,46	201.997	142.225	9.830	354.052	157,01	570,83	199.114	108.027	9.866	317.007
5	2001	651.52	204.768	145.221	884	350.874	1.217,69	202.389	116.873	977	320.239	155,14	566,17	199.652	84.251	1.084	284.986
6	2001	653.56	205.038	42.154	475	247.666	1.224,03	202.626	36.855	541	240.022	152,98	570,48	199.862	30.784	617	231.264
7	2001	643.59	205.414	7.775	14	213.203	1.211,29	202.977	6.578	17	209.572	152,06	567,70	200.215	5.220	21	205.456
8	2001	680.98	215.156	32.531	12	247.699	1.286,98	212.588	25.163	19	237.769	158,75	606,01	209.702	16.883	26	226.611
9	2001	670.84	215.188	145.836	245	361.268	1.269,93	212.789	113.259	208	326.256	157,86	599,09	210.103	76.781	167	287.051
10	2001	673.96	215.518	119.662	351	335.531	1.272,46	213.080	92.878	398	306.356	157,07	598,50	210.335	62.717	451	273.503
11	2001	676.59	216.129	123.284	406	339.820	1.277,18	213.414	98.335	417	312.166	156,78	600,58	210.355	70.228	429	281.012
12	2001	674.63	216.060	130.299	34.395	380.753	1.275,64	213.428	105.340	34.123	352.891	156,06	601,01	210.474	77.324	33.819	321.616

Kennarasamband Íslands, ríkisstarfsmenn er nú samsettur hópur úr af HÍK framhaldsskólalópnum og KÍ framhaldsskólalópnum og reiknað kaupmáttur miðað við veginn meðaltal þeirra og miðast við janúar 1987=100

Félag íslenskra flugumferðarstjóra

MA	AR	Karlar				
		STG	DL	YL	ÖL	HL
1	2001	77,37	268.613	115.767	98.404	482.783
2	2001	75,80	288.855	121.597	102.803	513.255
3	2001	77,53	289.280	131.344	207.688	628.312
4	2001	78,81	286.859	171.248	115.689	573.796
5	2001	78,74	285.388	172.636	107.379	565.402
6	2001	80,77	283.254	158.370	106.091	547.715
7	2001	80,78	282.854	137.182	106.586	526.621
8	2001	84,02	284.261	151.356	104.060	539.677
9	2001	81,00	282.688	114.895	103.172	500.755
10	2001	80,00	283.383	114.596	102.740	500.719
11	2001	81,00	283.115	111.426	101.201	495.742
12	2001	81,00	283.411	98.628	136.122	518.161

Kjarafélag tæknifræðinga

MA	AR	Karlar				
		STG	DL	YL	ÖL	HL
1	2001					
2	2001					
3	2001					
4	2001					
5	2001					
6	2001					
7	2001					
8	2001					
9	2001					
10	2001					
11	2001					
12	2001					

Allir

STG	DL	YL	ÖL	HL	Km.dl
95,17	256.406	104.823	93.012	454.240	208,30
93,19	275.833	114.876	97.719	488.429	223,67
95,33	276.436	120.409	203.666	600.511	222,84
95,49	275.526	155.644	110.083	541.252	219,42
94,74	275.497	156.944	101.731	534.172	216,36
99,25	272.466	148.491	100.969	521.925	210,76
99,22	272.097	127.151	101.263	500.511	208,86
103,06	273.410	138.871	99.195	511.476	209,19
100,02	271.816	104.541	98.070	474.427	206,61
100,04	271.861	104.434	97.421	473.715	205,33
101,50	271.417	103.783	96.435	471.635	204,29
101,50	271.653	85.496	130.500	487.649	203,52

Konur

STG	DL	YL	ÖL	HL
17,80	203.349	57.255	69.573	330.177
17,39	219.078	85.583	75.563	380.224
17,80	220.492	72.785	186.148	479.425
16,68	221.981	81.915	83.594	387.490
16,00	226.820	79.723	73.938	380.481
18,48	225.313	105.313	78.580	409.206
18,44	224.974	83.211	77.945	386.131
19,04	225.523	83.775	77.728	387.025
19,02	225.516	60.446	76.342	362.304
20,04	225.861	63.868	76.185	365.914
20,50	225.196	73.585	77.604	376.385
20,50	225.196	33.605	108.289	367.090

Konur

STG	DL	YL	ÖL	HL

Læknafélag Íslands, sjúkrahúslæknar

MA	AR	Karlur					Allir						Konur				
		STG	DL	YL	ÖL	HL	STG	DL	YL	ÖL	HL	Km.dl	STG	DL	YL	ÖL	HL
1	2001	380,10	305.838	93.676	89.350	488.864	508,30	294.225	92.152	82.895	469.272	146,28	128,20	259.793	87.635	63.756	411.184
2	2001	370,09	309.439	89.587	86.457	485.482	488,70	298.032	90.452	79.236	467.721	146,28	118,61	262.443	93.152	56.705	412.300
3	2001	366,73	309.955	95.886	92.681	498.522	492,78	296.417	97.356	85.325	479.097	146,28	126,05	257.028	101.632	63.925	422.585
4	2001	367,50	310.397	94.905	107.039	512.342	493,77	296.250	95.811	96.918	488.979	146,28	126,28	255.079	98.446	67.462	420.987
5	2001	368,59	308.777	95.795	101.605	506.178	481,74	299.031	97.743	94.111	490.884	146,28	113,15	267.281	104.086	69.698	441.065
6	2001	396,16	322.106	101.093	101.463	524.662	518,60	311.853	101.415	96.034	509.303	146,28	122,44	278.679	102.455	78.471	459.605
7	2001	394,60	323.294	102.220	107.820	533.335	519,46	311.984	101.201	101.796	514.981	146,28	124,86	276.240	97.981	82.758	456.978
8	2001	385,73	323.788	104.013	117.394	545.195	510,88	312.758	103.293	106.939	522.989	146,28	125,15	278.760	101.073	74.714	454.547
9	2001	364,28	335.369	97.324	109.995	542.688	478,17	324.253	102.768	101.861	528.882	146,28	113,89	288.700	120.180	75.844	484.724
10	2001	362,80	338.536	102.952	103.581	545.069	481,94	325.348	106.548	96.876	528.772	146,28	119,13	285.185	117.500	76.458	479.143
11	2001	360,21	338.890	94.654	91.796	525.340	484,02	325.840	98.879	85.560	510.279	146,28	123,81	287.874	111.172	67.416	466.462
12	2001	367,65	336.720	95.262	137.561	569.544	488,12	324.091	101.866	129.697	555.654	146,28	120,48	285.553	122.016	105.699	513.268

Starfsmannafélag sinfóníuhljómsv. Ísl. *Eingreiðslur koma inn í dagvinnulaun í júní.*

MA	AR	Karlur					Allir						Konur				
		STG	DL	YL	ÖL	HL	STG	DL	YL	ÖL	HL	Km.dl	STG	DL	YL	ÖL	HL
1	2001	38,65	145.990	11.821	2.768	160.579	78,91	142.888	12.607	2.715	158.210	114,14	40,26	139.910	13.361	2.665	155.935
2	2001	39,35	147.426	3.448	4.518	155.392	80,98	143.734	3.786	4.209	151.729	114,60	41,63	140.243	4.105	3.918	148.266
3	2001	38,34	147.574	5.059	5.536	158.169	79,00	143.351	6.639	5.402	155.391	113,63	40,67	139.369	8.129	5.274	152.773
4	2001	37,65	148.139	11.973	15.791	175.903	79,26	143.810	11.430	15.111	170.350	112,61	41,62	139.894	10.939	14.495	165.328
5	2001	38,34	219.247	3.138	646	223.030	78,92	215.541	5.597	720	221.859	166,44	40,58	212.041	7.920	790	220.752
6	2001	40,54	267.664	4.580	0	272.245	81,84	262.418	5.716	0	268.134	199,59	41,31	257.269	6.830	0	264.099
7	2001	38,95	218.587	2.470	0	221.056	80,45	215.073	4.057	0	219.131	162,32	41,50	211.776	5.547	0	217.324
8	2001	39,88	217.853	0	0	217.853	81,84	214.732	0	0	214.732	161,55	41,96	211.765	0	0	211.765
9	2001	37,05	220.993	25.596	0	246.589	73,51	216.879	28.684	0	245.563	162,09	36,46	212.699	31.822	0	244.520
10	2001	37,71	218.837	61.244	0	280.081	76,07	215.934	52.440	0	268.374	160,36	38,36	213.079	43.784	0	256.863
11	2001	39,68	224.559	5.861	1.439	231.859	78,13	219.372	6.045	1.371	226.788	162,35	38,45	214.019	6.236	1.300	221.555
12	2001	40,16	221.096	5.459	33.572	260.127	78,66	217.013	4.250	35.292	256.555	159,86	38,50	212.753	2.990	37.086	252.829

Stéttarfélag verkfræðinga

MA	AR	Karlar				
		STG	DL	YL	ÖL	HL
1	2001	173,02	229.502	92.391	8.324	330.217
2	2001	171,26	230.970	91.195	7.485	329.650
3	2001	172,53	231.212	104.922	7.587	343.722
4	2001	177,07	233.107	91.565	18.810	343.482
5	2001	169,58	248.604	114.032	9.094	371.730
6	2001	172,47	247.259	98.831	14.664	360.754
7	2001	166,22	246.100	96.793	21.232	364.125
8	2001	169,55	249.558	95.142	11.178	355.878
9	2001	171,76	250.098	98.232	10.088	358.418
10	2001	170,11	251.608	109.174	12.886	373.669
11	2001	168,73	252.010	103.033	9.327	364.369
12	2001	171,22	251.211	105.754	45.694	402.659

Kjaranefnd heilsugæslulækna

MA	AR	Karlar				
		STG	DL	YL	ÖL	HL
1	2001	76,61	301.454	1.293	147.048	449.795
2	2001	77,71	300.031	2.640	131.151	433.822
3	2001	78,58	296.967	4.966	130.699	432.631
4	2001	79,22	319.167	4.543	141.505	465.216
5	2001	77,29	317.632	5.923	151.390	474.945
6	2001	91,58	300.529	4.746	129.689	434.964
7	2001	93,18	303.149	4.273	125.351	432.774
8	2001	95,93	303.309	3.426	131.519	438.254
9	2001	80,03	317.599	1.533	152.229	471.361
10	2001	78,92	319.905	1.354	150.817	472.076
11	2001	80,68	319.952	3.252	136.648	459.853
12	2001	81,76	317.233	1.739	196.131	515.103

Allir						
STG	DL	YL	ÖL	HL	Km.dl	
201,32	228.415	87.229	8.209	323.852	142,14	
199,56	229.857	89.683	6.950	326.490	142,77	
202,00	229.593	98.484	7.113	335.190	141,77	
205,87	231.587	89.822	17.893	339.302	141,27	
199,76	247.202	108.746	8.264	364.212	148,71	
202,77	246.062	94.837	13.122	354.022	145,79	
196,52	245.044	91.406	18.700	355.149	144,07	
203,63	248.614	89.205	9.664	347.483	145,71	
201,71	248.541	93.498	9.302	351.342	144,71	
201,01	249.619	103.397	12.295	365.311	144,41	
197,64	250.527	98.246	8.472	357.245	144,44	
199,79	249.790	101.474	45.172	396.436	143,35	

Allir						
STG	DL	YL	ÖL	HL	Km.dl	
102,74	294.201	1.406	134.690	430.297	209,10	
103,17	293.307	4.573	123.695	421.575	208,09	
104,92	290.731	3.937	120.645	415.313	205,04	
107,31	312.072	3.354	131.768	447.194	217,43	
105,03	310.490	6.380	141.954	458.824	213,34	
127,23	292.757	5.072	125.593	423.422	198,12	
129,17	294.828	6.336	122.700	423.864	197,99	
127,31	297.629	4.412	132.070	434.112	199,23	
110,94	307.415	4.186	141.581	453.182	204,43	
109,47	308.926	1.321	144.794	455.042	204,13	
109,41	310.960	2.398	131.382	444.741	204,77	
112,09	307.618	1.702	185.709	495.028	201,63	

Konur				
STG	DL	YL	ÖL	HL
28,30	221.767	55.670	7.502	284.938
28,30	223.117	80.538	3.708	307.363
29,47	220.114	60.793	4.336	285.244
28,80	222.239	79.109	12.253	313.601
30,18	239.322	79.044	3.597	321.963
30,30	239.249	72.103	4.348	315.700
30,30	239.249	61.855	4.809	305.912
34,07	243.915	59.664	2.132	305.711
29,95	239.611	66.351	4.797	310.759
30,90	238.672	71.595	9.036	319.303
28,91	241.873	70.310	3.488	315.671
28,57	241.272	75.816	42.048	359.136

Konur				
STG	DL	YL	ÖL	HL
26,13	272.939	1.738	98.459	373.136
25,46	272.783	10.474	100.937	384.193
26,34	272.130	868	90.654	363.652
28,09	292.064	0	104.306	396.370
27,74	290.594	7.651	115.667	413.912
35,65	272.795	5.910	115.070	393.775
36,00	273.286	11.678	115.838	400.802
31,38	280.270	7.428	133.755	421.452
30,91	281.047	11.055	114.011	406.113
30,56	280.572	1.236	129.239	411.047
28,73	285.706	0	116.592	402.298
30,33	281.700	1.601	157.620	440.920

Ýmsir, ríkisstarfsmenn

Apríl 2002

Kjaranefnd prófessorar

		Karlar							Konur									
MA	AR	STG	DL	YL	ÖL	HL		STG	DL	YL	ÖL	HL		STG	DL	YL	ÖL	HL
1	2001	157,73	261,720	25,537	37,024	324,280		179,95	259,914	25,862	36,393	322,168	153,14	22,22	247,092	28,170	31,912	307,174
2	2001	159,38	262,382	21,805	37,180	321,367		182,00	260,436	22,510	37,599	320,545	153,16	22,62	246,724	27,478	40,555	314,757
3	2001	158,11	261,840	21,190	40,008	323,038		180,73	259,948	21,831	40,755	322,535	151,98	22,62	246,724	26,314	45,982	319,020
4	2001	156,72	278,178	24,762	46,663	349,603		179,34	276,433	25,309	49,895	351,637	159,66	22,62	264,344	29,099	72,290	365,734
5	2001	156,72	278,178	25,903	46,907	350,987		179,34	276,433	27,394	45,605	349,432	157,45	22,62	264,344	37,727	36,584	338,655
6	2001	157,03	279,350	21,292	45,083	345,725		181,10	277,464	22,230	44,729	344,423	155,66	24,07	265,162	28,350	42,420	335,931
7	2001	155,50	277,858	26,520	47,954	352,332		181,87	275,830	26,963	47,055	349,847	153,55	26,37	263,870	29,572	41,752	335,194
8	2001	155,85	322,130	27,332	44,815	379,617		184,88	318,032	27,319	43,208	378,559	176,48	29,03	296,030	27,253	37,434	378,434
9	2001	159,70	325,955	24,363	19,729	370,047		187,07	322,471	23,881	18,593	364,946	177,77	27,37	302,142	21,072	11,968	335,182
10	2001	153,95	325,289	25,928	27,147	378,364		180,32	322,587	24,688	27,096	374,371	176,70	26,37	306,814	17,448	26,796	351,058
11	2001	154,32	324,990	27,395	44,258	396,643		181,00	321,909	27,212	40,387	389,508	175,72	26,68	304,085	26,157	17,994	348,237
12	2001	157,44	324,873	35,482	71,964	432,319		184,81	321,594	36,684	70,709	428,987	174,74	27,37	302,731	43,601	63,489	409,821

Kjaradómur

		Karlar							Konur									
MA	AR	STG	DL	YL	ÖL	HL		STG	DL	YL	ÖL	HL		STG	DL	YL	ÖL	HL
1	2001	50,66	312,795	0	17,249	330,044		77,66	306,555	0	15,073	321,628	109,63	27,00	294,847	0	10,989	305,836
2	2001	51,52	312,626	0	17,274	329,900		79,15	306,472	1,538	15,026	323,036	109,40	27,63	294,997	4,405	10,834	310,236
3	2001	51,08	312,775	0	17,502	330,278		78,68	306,524	0	15,773	322,298	108,77	27,60	294,956	0	12,573	307,529
4	2001	51,12	333,720	0	29,259	362,979		78,77	327,301	0	26,350	353,652	114,74	27,65	315,435	0	20,973	336,409
5	2001	54,16	342,391	0	17,456	359,846		81,19	333,546	0	15,842	349,388	115,31	27,03	315,828	0	12,609	328,437
6	2001	53,34	342,126	0	17,751	359,877		80,04	333,349	0	15,792	349,141	113,50	26,70	315,813	0	11,879	327,692
7	2001	56,31	341,562	0	16,299	357,861		83,01	333,280	0	14,878	348,158	112,61	26,70	315,813	0	11,879	327,692
8	2001	53,26	338,507	0	16,319	354,826		79,96	330,929	0	14,837	345,766	111,46	26,70	315,813	0	11,879	327,692
9	2001	53,17	336,365	0	15,739	352,105		80,59	329,468	0	14,320	343,788	110,24	27,42	316,094	0	11,567	327,660
10	2001	55,49	332,454	0	15,523	347,977		83,26	327,003	0	14,740	341,743	108,72	27,77	316,111	0	13,175	329,287
11	2001	54,36	340,928	0	15,847	356,775		82,43	333,085	0	15,181	348,266	110,36	28,07	317,898	0	13,891	331,789
12	2001	53,00	332,752	25,685	44,091	402,528		79,66	327,641	18,407	44,789	390,836	108,05	26,66	317,480	3,937	46,176	367,593

Ýmsir, ríkisstarfsmenn

Kaupmáttur miðar við 03/1993 = 100,00 en gefur ekki rétta mynd þar sem mikil fjölgun verður í bygjun árs 1997.

Kjaranefnd

MA	AR	Kartlar					Allir					Konur				
		STG	DL	YL	ÖL	HL	STG	DL	YL	ÖL	HL	STG	DL	YL	ÖL	HL
1	2001	251,44	310,683	17,287	91,886	419,855	304,14	308,410	15,642	90,578	414,631	140,75	297,568	7,795	84,340	389,703
2	2001	253,07	310,296	18,135	90,155	418,587	306,77	308,118	16,368	89,155	413,641	140,36	297,853	8,041	84,440	390,335
3	2001	253,74	310,352	19,557	90,927	420,837	308,89	308,304	17,464	89,250	415,018	139,61	298,878	7,830	81,536	388,244
4	2001	254,63	332,168	21,192	95,687	449,047	308,15	329,759	19,010	94,570	443,338	147,52	318,296	8,625	89,256	416,177
5	2001	255,38	332,329	21,003	95,671	449,002	311,23	329,978	18,717	94,214	442,909	145,58	319,227	8,265	87,554	415,047
6	2001	256,23	332,622	21,603	95,653	449,878	316,02	330,017	18,267	92,908	441,191	143,40	318,852	3,969	81,141	403,961
7	2001	251,57	332,993	19,210	96,575	448,777	308,15	330,082	16,663	95,519	442,265	142,33	317,141	5,340	90,824	413,305
8	2001	257,86	336,979	16,643	99,005	452,626	312,57	334,315	14,489	97,365	446,168	143,69	321,760	4,337	89,636	415,733
9	2001	253,73	336,796	17,467	97,545	451,808	305,93	334,127	15,618	96,025	445,769	142,67	321,154	6,625	88,636	416,415
10	2001	252,59	337,399	37,074	99,464	473,937	304,78	334,710	32,186	97,136	464,033	142,01	321,696	8,536	85,875	416,106
11	2001	252,09	337,242	20,101	98,554	455,896	304,67	334,643	18,327	96,994	449,985	141,49	322,186	9,827	89,516	421,529
12	2001	255,02	336,668	14,472	147,167	498,307	308,51	333,983	13,414	145,088	492,486	140,56	321,184	8,370	135,179	464,732

Útan félaga

MA	AR	Kartlar					Allir					Konur				
		STG	DL	YL	ÖL	HL	STG	DL	YL	ÖL	HL	STG	DL	YL	ÖL	HL
1	2001	77,13	250,594	100,693	23,009	374,296	95,13	249,955	100,471	21,284	371,710	134,44	247,219	99,520	13,892	360,630
2	2001	78,60	253,579	96,193	24,859	374,631	96,60	253,399	97,005	22,871	373,274	136,04	252,613	100,549	14,189	367,351
3	2001	78,15	258,327	96,906	23,900	379,134	96,15	257,734	98,071	22,082	377,888	137,55	255,160	103,130	14,189	372,478
4	2001	78,15	268,551	98,502	36,577	403,631	96,15	267,297	99,914	34,246	401,457	140,93	261,851	106,044	24,123	392,018
5	2001	79,62	272,830	103,220	27,956	404,006	97,03	271,414	104,843	28,512	404,769	141,12	264,941	112,266	31,050	408,257
6	2001	76,15	269,437	106,434	25,726	401,597	93,15	269,711	107,094	25,009	401,814	138,12	270,938	110,051	21,797	402,785
7	2001	74,15	274,379	92,619	29,664	396,662	95,15	273,764	95,152	28,326	397,242	139,12	270,938	106,794	22,173	399,905
8	2001	74,15	274,625	88,747	27,991	391,363	92,15	274,899	87,069	26,595	388,563	139,25	276,027	80,156	20,845	377,027
9	2001	75,04	276,593	96,533	24,089	397,215	95,03	275,287	95,159	22,858	393,304	138,53	270,363	90,001	18,240	378,624
10	2001	75,25	278,953	101,578	23,126	403,657	92,25	279,025	97,260	22,946	399,230	139,52	279,344	78,145	22,145	379,635
11	2001	74,60	279,366	104,359	22,856	406,581	91,60	279,916	104,448	22,724	407,089	139,48	282,333	104,842	22,145	409,320
12	2001	73,24	279,455	118,722	62,260	460,437	90,46	279,949	112,414	61,330	453,692	138,85	282,049	85,587	57,372	425,008

Ýmsir, ríkisstarfsmenn

Apríl 2002

Kjaradómur, dómárar

		Kjarlar						Allir						Konur					
MA	AR	STG	DL	YL	ÖL	HL	STG	DL	YL	ÖL	HL	Km.dl	STG	DL	YL	ÖL	HL		
1	2001	36.49	339.471	139.322	45.343	524.136	49.49	335.332	137.647	36.834	509.814	117.49	13,00	323.713	132.946	12.951	469.610		
2	2001	37.00	340.215	138.951	32.194	511.360	51,00	335.548	134.730	30.366	500.644	117,35	14,00	323.214	123.574	25.536	472.324		
3	2001	35.00	337.025	142.732	38.152	517.909	49,00	334.697	139.625	35.444	509.766	116,37	14,00	328.879	131.859	28.672	489.411		
4	2001	35.00	360.279	152.781	59.792	572.853	48,98	357.846	149.607	48.988	556.442	122,91	13,98	351.755	141.662	21.939	515.356		
5	2001	35.00	360.279	154.890	41.065	556.234	49,00	357.791	151.699	35.080	544.570	121,19	14,00	351.572	143.720	20.118	515.409		
6	2001	35.77	359.812	152.841	45.969	558.622	49,21	357.715	153.558	44.734	556.007	119,34	13,44	352.133	155.464	41.450	549.047		
7	2001	38.40	358.604	142.818	33.065	534.487	52,57	356.913	133.846	27.816	518.574	118,16	14,17	352.327	109.524	13.584	475.435		
8	2001	36.00	359.677	155.276	42.960	557.912	47,56	358.367	151.631	38.806	548.805	118,26	11,56	354.290	140.281	25.872	520.444		
9	2001	36.00	359.677	152.541	39.721	551.939	48,00	358.192	151.343	36.232	545.766	117,43	12,00	353.737	147.749	25.764	527.250		
10	2001	36.00	359.677	154.397	39.728	553.802	48,00	358.449	151.395	34.060	543.904	116,76	12,00	354.765	142.390	17.055	514.210		
11	2001	36.00	359.677	154.788	33.476	547.940	48,00	358.449	154.661	32.494	545.604	116,36	12,00	354.765	154.281	29.550	538.595		
12	2001	36.00	359.677	152.444	77.694	589.814	48,00	358.449	151.029	74.968	584.445	115,82	12,00	354.765	146.785	66.789	568.339		

Prestafélag Íslands Kaupmáttur miðast við 01/1993 = 100,00 og tvöfalt mánaðarkaup greiddist í febrúar ár hvert sem og stöðugildi.

		Kjarlar						Allir						Konur					
MA	AR	STG	DL	YL	ÖL	HL	STG	DL	YL	ÖL	HL	Km.dl	STG	DL	YL	ÖL	HL		
1	2001	112.70	205.898	-54	47.949	253.793	144,26	206.205	-42	46.664	252.827	169,69	31,56	207.302	0	42.076	249.378		
2	2001	220.29	202.456	0	24.284	226.740	279,12	202.677	0	23.949	226.626	166,48	58,83	203.508	0	22.693	226.201		
3	2001	109.41	205.597	0	50.821	256.419	141,10	206.058	0	49.586	255.644	168,26	31,70	207.647	0	45.323	252.970		
4	2001	109.54	219.729	0	54.536	274.266	140,71	220.127	0	52.902	273.029	177,58	31,17	221.525	0	47.159	268.684		
5	2001	107.89	219.616	0	54.748	274.363	143,49	220.076	0	52.151	272.228	175,08	35,60	221.472	0	44.283	265.755		
6	2001	107.85	219.576	0	54.779	274.355	140,85	220.017	0	53.234	273.251	172,40	33,00	221.459	0	48.183	269.642		
7	2001	171.41	215.892	0	34.174	250.066	224,38	216.372	0	33.149	249.522	168,24	52,98	217.926	0	29.835	247.761		
8	2001	105.00	219.638	0	55.537	275.175	138,30	220.088	0	53.652	273.740	170,58	33,30	221.507	0	47.710	269.216		
9	2001	106.13	219.870	0	54.700	274.570	138,69	220.315	0	53.151	273.466	169,64	32,56	221.766	0	48.103	269.869		
10	2001	107.49	219.875	0	55.513	275.388	140,50	220.434	0	53.703	274.137	168,65	33,02	222.253	0	47.813	270.067		
11	2001	108.18	220.024	0	54.994	275.018	140,04	220.520	0	53.375	273.896	168,13	31,86	222.205	0	47.878	270.083		
12	2001	106.67	219.989	0	102.194	322.183	138,23	220.488	0	100.922	321.410	167,33	31,56	222.173	0	96.621	318.794		

Stéttarfélag íslenskra lyfjafraeðinga*Kaupmáttur miðast við janúar 1991 = 100,00*

		Karlar					Allir						Konur				
MA	AR	STG	DL	YL	ÖL	HL	STG	DL	YL	ÖL	HL	Km.dl.	STG	DL	YL	ÖL	HL
1	2001						25,70	218.724	86.473	21.364	326.560	120,14					
2	2001						26,70	219.287	94.478	18.225	331.990	120,23					
3	2001						21,29	217.624	67.205	6.189	291.017	118,61					
4	2001						18,65	223.958	64.914	36.614	325.486	120,59					
5	2001						18,31	223.092	64.837	7.450	295.379	118,46					
6	2001						20,22	212.806	61.156	11.080	285.041	111,29					
7	2001						20,36	213.387	93.882	6.227	313.496	110,74					
8	2001						20,06	213.300	65.140	6.431	284.871	110,34					
9	2001						19,77	217.045	78.054	6.564	301.663	111,54					
10	2001						20,35	218.047	73.872	7.735	299.655	111,34					
11	2001						20,88	216.588	74.356	6.996	297.940	110,22					
12	2001						20,88	216.588	35.016	39.045	290.649	109,71					

Starfsmannafélag Alþingis*Kaupmáttur miðast við 01/1991 = 100,00*

		Karlar					Allir						Konur				
MA	AR	STG	DL	YL	ÖL	HL	STG	DL	YL	ÖL	HL	Km.dl	STG	DL	YL	ÖL	HL
1	2001	70,09	195.498	11.708	70.324	277.530	139,66	181.664	11.685	48.732	242.080	148,53	69,58	167.728	11.662	26.981	206.371
2	2001	68,73	197.157	11.977	68.696	277.830	138,51	182.330	13.682	47.718	243.730	148,80	69,78	167.727	15.360	27.056	210.143
3	2001	67,71	197.902	10.502	72.007	280.412	135,55	182.714	10.653	49.822	243.189	148,24	67,84	167.554	10.804	27.678	206.036
4	2001	67,55	200.735	11.954	192.563	405.252	135,43	185.454	14.096	168.694	368.244	148,64	67,88	170.247	16.227	144.940	331.414
5	2001	69,95	210.166	24.637	114.254	349.056	137,47	196.163	22.437	80.105	298.705	155,05	67,52	181.656	20.159	44.729	246.544
6	2001	72,42	208.798	17.454	74.303	300.555	140,95	196.456	16.522	52.796	265.773	152,94	68,53	183.413	15.537	30.067	229.016
7	2001	73,37	209.260	8.715	74.125	292.100	139,45	197.326	6.359	53.712	257.397	152,44	66,08	184.076	3.743	31.047	218.866
8	2001	72,50	209.214	13.471	74.510	297.195	141,84	197.224	8.216	53.670	259.110	151,87	69,34	184.688	2.721	31.881	219.290
9	2001	72,95	211.196	9.338	78.976	299.510	145,26	199.009	5.993	55.343	260.345	152,24	72,31	186.715	2.618	31.501	220.834
10	2001	71,48	212.634	16.199	78.557	307.390	144,58	199.710	12.483	55.746	267.939	151,81	73,10	187.073	8.849	33.439	229.361
11	2001	74,24	212.970	13.729	76.060	302.759	147,11	200.079	13.277	54.909	268.265	151,57	72,87	186.946	12.816	33.361	233.124
12	2001	70,54	211.890	42.716	113.841	368.448	141,79	199.358	33.242	90.939	323.540	150,32	71,25	186.950	23.862	68.265	279.078

Leikarafélag Íslands (Ath. að sýningarlaun eru meðtalin til dagvinnulauna árið 2000)

Kaupmáttur miðast við meðaltal ársins 1997 = 100,00

MA	AR	Karlar					Allir						Konur				
		STG	DL	YL	ÖL	HL	STG	DL	YL	ÖL	HL	Km.dl.	STG	DL	YL	ÖL	HL
1	2001	19,66	196.783	14.185	6.887	217.854	40,40	197.383	15.347	6.567	219.297	130,71	20,73	197.951	16.449	6.265	220.665
2	2001	19,72	219.937	37.638	4.962	262.537	43,48	203.427	24.412	3.532	231.372	134,47	23,75	189.717	13.429	2.345	205.491
3	2001	19,85	244.024	70.010	11.829	325.863	41,94	218.634	47.552	7.568	273.754	143,67	22,10	195.829	27.380	3.740	226.950
4	2001	19,85	212.561	34.638	15.326	262.525	41,94	207.698	24.024	14.444	246.166	134,83	22,10	203.330	14.490	13.653	231.473
5	2001	23,03	224.222	21.164	5.220	250.606	45,28	219.205	14.669	5.073	238.947	140,33	22,25	214.013	7.947	4.921	226.881
6	2001	22,31	216.274	16.992	4.279	237.545	43,18	218.627	15.187	4.802	238.616	137,85	20,87	221.143	13.259	5.360	239.761
7	2001	17,00	206.081	14.665	1.325	222.070	32,63	199.121	9.248	690	209.059	124,59	15,63	191.551	3.356	0	194.908
8	2001	17,00	193.904	0	0	193.904	32,26	192.743	0	0	192.743	120,21	15,26	191.449	0	0	191.449
9	2001	21,73	204.518	20.511	3.121	228.150	44,69	199.883	14.782	2.956	217.621	123,85	22,96	195.496	9.360	2.800	207.655
10	2001	22,66	231.430	24.226	9.719	265.375	45,68	220.807	28.593	8.891	258.292	135,94	23,02	210.347	32.894	8.076	251.317
11	2001	23,91	245.324	33.822	7.796	286.942	46,91	235.318	26.449	6.939	268.706	144,38	23,00	224.914	18.781	6.048	249.742
12	2001	23,91	206.938	16.790	33.712	257.440	48,03	198.450	14.722	33.599	246.771	121,19	24,12	190.032	12.671	33.487	236.191

3.5 Starfsmenn Reykjavíkurborgar

Kaupmáttur hjá Reykjavíkurborg miðast við meðaltal 1990 = 100,00, nema annað sé tekið fram.

Starfsmannafélag Reykjavíkurborgar, án háskólahóps

		Karlar						Allir						Konur					
MA	AR	STG	DL	YL	ÖL	HL	STG	DL	YL	ÖL	HL	Km.di.	STG	DL	YL	ÖL	HL		
1	2001	712,72	132,956	70,712	18,073	221,740	1,797,08	130,225	43,132	10,346	183,703	154,66	1,084,36	128,431	25,004	5,268	158,702		
2	2001	719,28	133,073	63,319	17,182	213,574	1,806,74	130,450	40,919	9,867	181,237	154,64	1,087,46	128,715	26,103	5,029	159,848		
3	2001	719,29	134,104	63,248	16,521	213,873	1,808,56	130,790	40,136	9,579	180,505	154,13	1,089,27	128,602	24,874	4,995	158,471		
4	2001	720,97	134,822	75,294	16,515	226,630	1,822,09	130,852	45,323	9,575	185,750	152,34	1,101,12	128,253	25,700	5,030	158,984		
5	2001	724,44	134,534	69,961	15,885	220,380	1,866,20	130,114	43,430	9,105	182,648	149,38	1,141,76	127,309	26,596	4,802	158,708		
6	2001	842,37	128,832	56,711	12,606	198,149	2,068,10	126,152	36,689	8,307	171,148	142,65	1,225,74	124,311	22,929	5,353	152,592		
7	2001	868,75	127,850	50,989	12,199	191,038	2,076,67	124,789	33,777	7,969	166,535	140,03	1,207,92	122,588	21,397	4,926	148,912		
8	2001	780,91	131,060	53,120	16,160	200,340	1,957,79	127,028	33,656	10,204	170,888	142,08	1,176,88	124,353	20,741	6,251	151,345		
9	2001	700,30	135,494	64,635	15,913	216,041	1,835,44	130,116	39,466	8,973	178,555	144,58	1,135,14	126,798	23,939	4,691	155,428		
10	2001	709,36	135,028	58,163	15,874	209,065	1,855,28	129,950	36,446	8,845	175,242	143,48	1,145,92	126,807	23,003	4,494	154,304		
11	2001	709,45	135,040	58,938	16,756	210,734	1,859,90	130,218	36,740	9,361	176,318	143,28	1,147,45	127,236	23,015	4,789	155,040		
12	2001	719,68	135,484	55,287	49,797	240,568	1,872,34	130,372	34,548	41,429	206,348	142,79	1,152,66	127,180	21,599	36,204	184,983		

Starfsmannafélag Reykjavíkurborgar, háskólahópur

		Karlar						Allir						Konur					
MA	AR	STG	DL	YL	ÖL	HL	STG	DL	YL	ÖL	HL	Km.di.	STG	DL	YL	ÖL	HL		
1	2001	63,67	211,289	61,317	3,266	275,872	179,49	201,783	39,782	4,466	246,030	164,06	115,82	196,557	27,944	5,125	229,626		
2	2001	62,17	211,120	63,057	3,882	278,059	179,86	201,736	41,750	5,179	248,665	163,72	117,69	196,779	30,495	5,864	233,138		
3	2001	62,23	214,935	69,786	4,193	288,914	180,13	203,712	41,961	4,906	250,580	164,35	117,90	197,788	27,273	5,283	230,345		
4	2001	61,30	214,408	63,809	4,144	282,361	176,71	203,406	42,470	4,908	250,784	162,12	115,41	197,563	31,136	5,313	234,012		
5	2001	61,23	212,996	75,245	4,320	292,562	176,81	201,116	49,047	5,383	255,545	158,08	115,57	194,821	35,166	5,946	235,932		
6	2001	61,98	214,982	75,466	3,632	294,079	177,83	202,322	48,660	4,540	256,522	157,49	115,85	197,083	34,318	5,026	236,427		
7	2001	64,69	213,247	78,273	3,796	295,315	178,33	202,404	49,399	4,157	255,961	155,49	113,64	196,232	32,964	4,363	233,559		
8	2001	67,51	212,641	72,540	4,355	289,536	180,56	200,805	44,627	5,104	250,536	153,77	113,05	193,738	27,958	5,551	227,247		
9	2001	65,57	215,011	72,464	4,193	291,668	178,11	203,241	46,819	4,919	254,979	154,61	112,54	196,384	31,877	5,342	233,603		
10	2001	65,98	213,467	83,504	5,381	302,352	181,30	202,228	57,462	5,732	265,422	152,86	115,32	195,797	42,564	5,933	244,294		
11	2001	68,03	214,624	91,047	4,992	310,662	188,40	202,232	65,221	5,578	273,031	152,34	120,38	195,230	50,626	5,909	251,765		
12	2001	67,90	213,633	112,311	45,363	371,307	186,84	202,147	74,786	41,953	318,886	151,57	118,94	195,590	53,364	40,007	288,961		

Starfsmannafélag Reykjavíkurborgar, alls

MA	AR	Karlur					Allir						Konur				
		STG	DL	YL	ÖL	HL	STG	DL	YL	ÖL	HL	Km.dl.	STG	DL	YL	ÖL	HL
1	2001	776,39	139.379	69.942	16.859	226.180	1.976,57	136.723	42.827	9.812	189.363	154,86	1.200,18	135.005	25.287	5.254	165.546
2	2001	781,45	139.282	63.298	16.124	218.704	1.986,60	136.904	40.995	9.443	187.341	154,78	1.205,15	135.362	26.532	5.111	167.005
3	2001	781,52	140.541	63.769	15.539	219.849	1.988,69	137.396	40.302	9.156	186.853	154,42	1.207,17	135.359	25.109	5.023	165.491
4	2001	782,27	141.058	74.394	15.545	230.997	1.998,80	137.267	45.071	9.162	191.500	152,41	1.216,53	134.829	26.216	5.057	166.101
5	2001	785,68	140.649	70.372	14.984	226.005	2.043,01	136.258	43.916	8.783	188.957	149,20	1.257,33	133.515	27.384	4.907	165.806
6	2001	904,35	134.736	57.996	11.991	204.724	2.245,94	132.262	37.637	8.009	177.908	142,64	1.341,59	130.595	23.912	5.324	159.831
7	2001	933,44	133.768	52.880	11.617	198.264	2.255,00	130.927	35.012	7.667	173.607	140,12	1.321,56	128.920	22.392	4.878	156.190
8	2001	848,42	137.551	54.665	15.221	207.437	2.138,35	133.258	34.582	9.773	177.613	142,16	1.289,93	130.434	21.373	6.190	157.997
9	2001	765,87	142.302	65.305	14.909	222.516	2.013,55	136.584	40.116	8.614	185.315	144,75	1.247,68	133.075	24.655	4.750	162.480
10	2001	775,33	141.703	60.319	14.981	217.003	2.036,57	136.385	38.317	8.568	183.269	143,62	1.261,24	133.115	24.791	4.626	162.532
11	2001	777,48	142.003	61.747	15.727	219.478	2.045,30	136.851	39.363	9.013	185.227	143,61	1.267,83	133.692	25.637	4.895	164.223
12	2001	787,57	142.222	60.203	49.414	251.839	2.059,18	136.884	38.199	41.476	216.559	142,98	1.271,60	133.579	24.570	36.559	194.709

Félag ísl. leikskólakennara hjá Rborg *Kaupmáttur miðast við 01/1989 = 100,00*

MA	AR	Karlur					Allir						Konur				
		STG	DL	YL	ÖL	HL	STG	DL	YL	ÖL	HL	Km.dl.	STG	DL	YL	ÖL	HL
1	2001						399,92	163.169	31.387	1.445	196.002	159,78					
2	2001						401,80	162.177	30.592	1.155	193.925	158,52					
3	2001						406,71	161.978	28.376	1.021	191.375	157,39					
4	2001						411,59	161.775	30.442	1.273	193.490	155,29					
5	2001						427,73	160.257	30.655	1.635	192.546	151,71					
6	2001						428,79	158.396	22.098	1.581	182.075	147,69					
7	2001						403,03	159.139	21.930	1.602	182.672	147,24					
8	2001						411,94	158.367	26.282	1.327	185.976	146,06					
9	2001						432,65	157.351	28.477	857	186.686	144,17					
10	2001						437,60	157.076	28.695	1.068	186.840	143,00					
11	2001						435,76	156.396	27.228	1.069	184.693	141,89					
12	2001						433,13	157.064	24.012	46.383	227.460	141,84					

Sjúkraliðafélag Íslands hjá Rborg

Kaupmáttur miðast við 01/1992 = 100,00

MA	AR	Karlar					Allir						Km.dl.	Konur	DL	YL	ÖL	HL
		STG	DL	YL	ÖL	HL	STG	DL	YL	ÖL	HL							
1	2001						41,45	123.056	37.055	7.177	167.289	149,85						
2	2001						43,81	121.802	31.616	19.064	172.482	148,05						
3	2001						43,15	121.743	20.622	8.061	150.426	147,10						
4	2001						42,74	121.909	28.084	19.025	169.017	145,52						
5	2001						42,93	121.526	55.028	13.398	189.952	143,06						
6	2001						42,00	121.852	40.614	12.907	175.373	141,28						
7	2001						42,89	124.199	19.214	8.681	152.093	142,90						
8	2001						42,60	124.596	29.069	8.798	162.463	142,89						
9	2001						40,96	124.671	35.199	13.379	173.248	142,04						
10	2001						44,25	125.078	28.237	13.886	167.201	141,60						
11	2001						40,16	156.095	41.811	23.590	221.496	176,11						
12	2001						48,03	156.328	30.355	47.082	233.765	175,55						

Háskólamenn innan BHM hjá Rborg

MA	AR	Karlar					Allir						Km.dl.	Konur	DL	YL	ÖL	HL
		STG	DL	YL	ÖL	HL	STG	DL	YL	ÖL	HL							
1	2001	56,00	220.814	57.914	635	279.363	217,84	187.444	32.635	4.216	224.295	170,83	161,84	175.897	23.887	5.456	205.240	
2	2001	58,05	221.669	69.891	673	292.232	217,87	188.522	46.551	6.836	241.909	171,50	159,82	176.482	38.074	9.074	223.630	
3	2001	58,00	221.630	68.158	3.697	293.485	216,96	188.706	41.155	4.786	234.646	170,66	158,96	176.693	31.302	5.183	213.178	
4	2001	59,63	231.512	74.653	1.933	308.097	224,62	208.635	44.566	7.289	260.490	186,40	164,99	200.367	33.693	9.224	243.283	
5	2001	58,44	231.587	71.007	1.294	303.888	212,97	212.096	50.840	5.126	268.062	186,87	154,53	204.725	43.212	6.575	254.512	
6	2001	56,74	230.886	66.684	502	298.072	211,06	215.029	43.092	5.266	263.387	186,60	154,32	209.199	34.417	7.018	250.634	
7	2001	57,50	230.748	77.649	375	308.772	226,01	211.071	41.056	4.410	256.536	181,76	168,51	204.356	28.570	5.786	238.713	
8	2001	59,47	255.960	56.013	695	312.668	240,51	219.274	34.246	4.338	257.858	188,22	181,05	207.224	27.096	5.535	239.854	
9	2001	61,76	257.282	71.214	1.412	329.908	256,23	218.250	38.747	4.403	261.399	186,11	194,48	205.855	28.436	5.353	239.644	
10	2001	64,46	263.481	83.514	2.151	349.146	262,05	219.778	44.944	4.852	269.574	186,22	197,59	205.521	32.361	5.733	243.615	
11	2001	66,68	260.309	88.848	901	350.059	263,28	218.817	42.760	4.875	266.452	184,77	196,60	204.744	27.129	6.222	238.096	
12	2001	66,21	256.798	91.899	32.486	381.183	263,99	217.963	43.968	36.115	298.045	183,19	197,78	204.962	27.923	37.329	270.214	

Starfsmenn Reykjavíkurborgar

Apríl 2002

Háskólamenn utan bandalaga hjá Rborg

		Karlar				Allir				Konur							
MA	AR	STG	DL	YL	ÖL	HL	STG	DL	YL	ÖL	HL	Km.dl.	STG	DL	YL	ÖL	HL
1	2001						103,53	264,751	87,711	3,264	355,726	172,24					
2	2001						103,53	264,630	89,287	2,818	356,735	171,84					
3	2001						101,81	264,944	88,760	5,620	359,324	171,03					
4	2001						102,53	272,886	87,651	4,520	365,057	174,03					
5	2001						100,53	274,601	93,466	3,232	371,298	172,70					
6	2001						103,79	271,815	95,456	4,255	371,526	168,37					
7	2001						100,79	273,558	85,056	3,120	361,735	168,15					
8	2001						101,99	273,336	73,712	3,666	350,714	167,48					
9	2001						103,07	273,510	87,182	2,846	363,537	166,49					
10	2001						102,65	274,444	96,539	2,661	373,644	165,99					
11	2001						100,93	275,610	92,425	3,085	371,120	166,12					
12	2001						102,31	275,397	112,362	41,963	429,721	165,23					

Kennarahópur hjá Rborg Kaupmáttur miðast við 08/1996 = 100,00

		Karlar				Allir				Konur							
MA	AR	STG	DL	YL	ÖL	HL	STG	DL	YL	ÖL	HL	Km.dl.	STG	DL	YL	ÖL	HL
1	2001	287,60	164,855	82,753	173	247,781	1,356,17	153,671	58,577	155	212,404	131,85	1,068,57	150,661	52,070	151	202,882
2	2001	283,12	164,950	93,751	102	258,803	1,359,57	153,762	65,244	50	219,056	131,69	1,076,45	150,819	57,746	37	208,602
3	2001	285,17	164,203	100,912	142	265,257	1,363,07	153,436	69,926	77	223,439	130,63	1,077,91	150,587	61,729	60	212,375
4	2001	284,49	164,667	98,046	102	262,815	1,362,25	153,432	67,136	27	220,594	129,05	1,077,76	150,466	58,977	7	209,449
5	2001	284,69	164,716	95,177	263	260,156	1,353,81	153,170	65,855	475	219,500	127,05	1,069,12	150,095	58,047	532	208,674
6	2001	280,53	163,562	36,499	221	200,281	1,347,37	152,326	28,604	694	181,623	124,44	1,066,84	149,371	26,528	818	176,717
7	2001	279,96	164,232	14,175	380	178,787	1,329,18	152,781	8,007	261	161,049	123,86	1,049,22	149,725	6,362	230	156,317
8	2001	302,35	214,050	14,949	60	229,060	1,432,26	200,198	10,532	83	210,813	161,78	1,129,90	196,491	9,350	89	205,930
9	2001	292,93	215,686	49,854	6	265,546	1,410,82	200,562	33,785	2	234,349	161,01	1,117,90	196,599	29,575	1	226,175
10	2001	295,65	215,782	55,642	6	271,430	1,417,67	200,088	39,789	1	239,879	159,60	1,122,03	195,952	35,612	0	231,565
11	2001	297,25	215,254	55,644	1	270,900	1,420,98	199,658	39,594	0	239,252	158,71	1,123,73	195,532	35,349	0	230,881
12	2001	298,01	215,472	56,189	41,232	312,893	1,430,53	199,078	39,925	41,424	280,426	157,52	1,132,52	194,764	35,645	41,474	271,883

4. Starfsmenn annarra sveitarfélaga

4.1 Inngangur

KOS hefur undanfarið safnað launaupplýsingum frá sveitarfélögum víðsvegar af landinu. Sú gagnasöfnun var í upphafi heldur frumstæð. Á síðastliðnu ári byrjaði Kjararannsóknarnefnd SA og ASÍ (skammstafað: KRN) að vinna með KOS við að setja upp skilin á betri hátt. Þar sem starfsmaður KOS var í barnsburðarleyfi, þá gekk þetta ekki eins hratt fyrir sig og æskilegt hefði verið. Nokkuð hefur þó áunnist síðan, eins og kemur fram í meðfylgjandi töflu, sem sýnir

meðallaun frá allmörgum sveitarfélögum. Áfram verður haldið þeirri áætlun að safna og birta upplýsingar frá sveitarfélögum, sem eru kaupstaðir og/eða hafa fleiri íbúa en 1000.

Jafnframt munu upplýsingarnar verða notaðar í úrtak Hagstofu fyrir launavísitölu og KRN notar upplýsingarnar vegna tölfræðivinnslu fyrir þá starfsmenn sveitarfélaganna, sem eru innan ASÍ.

4.2 Meðaltöl hjá nokkrum sveitarfélögum árið 2001

Akranes, Akureyri, Árborg, Bessastaðahreppur, Borgarbyggð, Dalvík, Garðabær, Gerðahreppur, Grindavík, Hafnarfjörður, Kópavogur, Mosfellsbær, Reykjanesbær, Seltjarnarnes, Skagafjörður, Vestmannaeyjar og Ölfushreppur

Allir í starfsmannafélögum

Ár	Mán./árfj.	Stg.	DI.	YI.	ÖI.	HI.
2001	1	1.748,84	108.950	16.006	12.415	137.372
	2	1.771,92	110.515	25.288	17.237	153.039
	3	1.843,04	109.571	26.663	16.510	152.743
	4	1.837,85	112.313	26.890	22.579	161.781
	5	1.939,25	121.207	28.294	31.453	180.954
	6	2.034,75	123.372	28.590	35.340	187.312
	7	1.976,94	117.274	25.860	17.041	160.175
	8	1.999,07	113.945	23.676	18.233	155.844
	9	1.908,01	120.587	25.401	19.647	165.635
	10	1.945,99	121.522	28.627	18.092	168.241
	11	1.979,17	119.277	27.478	43.468	190.223
	12	1.935,63	122.520	34.478	48.313	205.311
2001	1.fj.	1.787,93	109.680	22.734	15.415	147.829
	2.fj.	1.937,28	119.152	27.954	30.008	177.117
	3.fj.	1.961,34	117.217	24.969	18.291	160.474
	4.fj.	1.953,60	121.093	30.171	36.642	187.907

Leikskólakennarahópur

Ár	Mán./árfj.	Stg.	DI.	YI.	ÖI.	HI.
2001	1	412,68	120.163	21.400	9.817	151.381
	2	416,98	134.958	32.232	12.963	180.153
	3	426,28	170.439	32.161	14.969	217.570
	4	356,67	176.656	30.908	14.719	222.294
	5	441,73	160.856	28.194	14.648	203.699
	6	452,54	159.910	27.906	14.021	201.837
	7	436,42	156.486	22.121	9.755	188.362
	8	414,95	159.130	19.086	11.482	189.708
	9	361,56	158.421	28.144	12.096	198.671
	10	442,63	163.004	30.935	10.333	204.262
	11	443,43	163.207	34.272	27.433	224.913
	12	324,21	164.623	36.864	41.959	243.436
2001	1.fj.	418,65	142.140	28.649	12.610	183.399
	2.fj.	416,98	165.019	28.864	14.442	208.327
	3.fj.	404,31	157.967	22.878	11.044	191.896
	4.fj.	403,42	163.512	33.746	25.071	222.322

Kennarahópur

Ár	Mán./árfj.	Stg.	DI.	YI.	ÖI.	HI.
2001	1	1.052,58	137.317	12.698	2.546	152.561
	2	1.072,25	137.707	59.940	11.442	209.099
	3	1.064,97	150.350	68.583	17.187	236.121
	4	1.070,58	143.952	67.565	9.970	221.478
	5	1.072,43	143.815	69.251	10.465	223.531
	6	1.068,41	142.819	74.576	20.800	238.196
	7	1.040,35	144.256	11.250	3.703	159.199
	8	1.080,66	184.654	3.861	3.166	191.682
	9	1.025,22	191.047	13.361	8.734	213.152
	10	934,20	200.355	37.142	8.935	246.431
	11	1.086,37	202.089	36.635	9.094	247.818
	12	1.213,99	188.200	59.764	42.879	290.832

Ár	Mán./áfj.	Stg.	DI.	YI.	ÖI.	HI.
2001	1.fj.	1.063,27	141.800	47.237	10.425	199.464
	2.fj.	1.070,47	143.529	70.461	13.739	227.725
	3.fj.	1.048,74	173.379	9.400	5.158	187.937
	4.fj.	1.078,19	196.375	45.462	21.728	263.562

Aðrir starfsmenn utan starfsmannafélaga

Ár	Mán./áfj.	Stg.	DI.	YI.	ÖI.	HI.
2001	1	707,88	137.674	21.712	9.725	169.101
	2	698,33	140.119	49.495	14.136	203.726
	3	503,25	145.507	54.337	20.576	220.420
	4	661,02	145.358	51.558	13.093	209.972
	5	629,31	150.533	59.972	17.553	228.029
	6	681,26	163.731	58.641	19.332	241.706
	7	682,07	142.699	16.871	8.412	167.982
	8	713,52	175.890	11.389	7.384	194.681
	9	739,73	182.858	16.071	6.783	205.712
	10	706,09	185.471	39.032	11.750	236.243
	11	736,99	188.685	39.847	18.143	246.665
	12	760,85	179.938	61.555	49.087	290.555
2001	1.fj.	636,49	140.633	40.471	14.198	195.290
	2.fj.	657,20	153.358	56.691	16.673	226.701
	3.fj.	711,77	167.702	14.762	7.504	189.974
	4.fj.	734,64	184.635	47.080	26.778	258.478

REGLUGERÐ UM NEFND UM KJARARANNSÓKNIR
OPINBERRA STARFSMANNA

1. gr.

Nefnd um kjararannsóknir opinberra starfsmanna starfar í þeim tilgangi að safna saman og miðla upplýsingum um kjör starfsmanna hjá opinberum aðilum, kjör annarra launþega og þróun launa og kjaramála almennt til þeirra, sem að nefndinni standa, sbr. 4. gr.

2. gr.

Nefndin aflar upplýsinga um kjör, sbr. 1. gr., sem hér segir:

1. Með söfnun, skipulagningu og skráningu upplýsinga um laun og önnur kjaraatriði opinberra starfsmanna, sem aðilar að nefndinni leggja henni til.
2. Með öflun og skipulegri skráningu upplýsinga frá öðrum aðilum, sem stunda reglubundnar kjararannsóknir.
3. Með gerð sérstakra athugana, sem aðilar að nefndinni ákveða hverju sinni.

3. gr.

Nefndin miðlar upplýsingum til þeirra opinberu vinnuveitenda, sem láta nefndinni í té upplýsingar og stéttarféлага starfsmanna þeirra með reglulegum skýrslum og sérstökum skýrslum eftir því sem við á.

Allar upplýsingar, sem safnað er eða unnar eru á vegum nefndarinnar, aðrar en þær, sem nefndin birtir, sbr. fyrri málsgrein, eru trúnaðarmál og er einstökum aðilum að nefndinni óheimilt að notfæra sér þær eða birta án samþykkis allra nefndarmanna.

4. gr.

Nefndin er skipuð 10 fulltrúum. Tveir fulltrúar vinnuveitenda eru tilnefndir af fjármálaráðherra, einn af launanefnd sveitarfélaga, einn af Reykjavíkurborg og einn úr hópi forsvarsmanna sjálfseignarstofnana samkvæmt nánari ákvörðun fjármálaráðherra.

Þrír fulltrúar launþega skulu tilnefndir af BSRB, einn af BHMR og einn af KÍ. Nefndin skiptir með sér verkum og ákveður sér framkvæmdastjórn.

5. gr.

Nefndin setur sér starfsreglur, m.a. um starfssvið og starfshætti og ákveður nánar með hvaða hætti hún hagar störfum að verkefnum skv. 1.-3. grein. Nefndin skal kosta kapps um að skapa einhug um lausn þeirra verkefna sem henni eru falin. Ákvarðanir um verkefni og birtingu á niðurstöðum verða ekki teknar með afli atkvæða.

6. gr.

Kostnaður vegna starfa nefndarinnar greiðist úr ríkissjóði samkvæmt fjárveitingum í fjárlögum. Nefndin ræður sér sjálf starfsmenn.

7. gr.

Reglugerð þessi er sett samkvæmt lögum nr. 94 31. desember 1986, um kjarasamninga opinberra starfsmanna og öðlast þegar gildi.

Fjármálaráðuneytið 7. júlí 1987

Þorsteinn Pálsson (sign)
Indriði H. Þorláksson (sign)



Kjararannsóknarnefnd
opinberra starfsmanna
Borgartúni 21, 105 R.